

"The best way to rapidly improve one's English proficiency in a short period of time is to use English as much as possible and be exposed to an English environment 24/7. To achieve this, B'Cebu is making an effort to apply this to all aspects of learning and living."



API BECI



B' CEBU

B' Cebu is Cebu Campus of API BECI which is located in Mactan Newtown.

API BECI has started its journey in the ESL field in 2002 in the summer capital of the Philippines, Baguio City. It offers variety of courses crafted to support our learners second language acquisition goals.

Our curriculum is learner-centered and gives the utmost emphasis on the learning process as we expand our learners learning strategies so they could learn more by themselves and learn faster as a result.

We understand that the learning environment is as important as the other factors in learning thus our campuses are established in pristine location, where our students can study comfortably. Also, the learning and living areas are designed to ensure conducive learning and comfortable living.

With four campuses in different locations, students can discover and experience each campus' unique specialties and distinctive academic programs and courses. In this way, students can broaden their perspectives and gain exposure to new experiences and ideas that can help them grow.



CAFE CAMPUS

43 Gladiola Street, Amparo Heights, Camp 7 Baguio City, Philippines

Courses Offered:

- Speed ESL 1
- Speed ESL 2
- Lite ESL
- 8weeks Working Holiday Preparation
- Junior ESL
- Junior IELTS



SPARTA CAMPUS

37 Yangco Rd., Upper General Luna Baguio City, Philippines

Courses Offered:

- 24 ESL
- IELTS
- TOEIC
- Junior ESL
- Junior IELTS



CITY CAMPUS

Zenmist properties # 48 Kisad Rd, Montinola Subd, Baguio City, Philippines

Courses Offered:

- Biz 2.0
- Speed ESL
- SP ESL
- Lite ESL
- Flexi Course

API BECI HISTORY

2002-2009

Opening of the Green Valley campus offering Semi Sparta courses

2010-2014

Hosted a Japanese university camp and opened Green Valley hotel dormitory; started offering Sparta Course

2015-2016

Opening of API BECI Main Campus offering Semi-Sparta /Sparta/ TOEIC / IELTS course.

2017-2018

Opened: Ho Chi Minh Branch in Vietnam and BECI Café Campus in Baguio

2019-2022

Started offering online courses and opened two campuses in Baguio (Sparta Campus & City Campus)

2023

Opening of B'CEBU



B' CEBU

Angasil Corner, Kasinto St., Mactan, Lapu-Lapu City Cebu, Philippines

Courses Offered:

- Speed ESL
- Intensive ESL
- IELTS
- Junior ESL
- Lite ESL
- 8weeks Working Holiday Preparation

GREETINGS

Hello and welcome to B'CEBU Language School.

B'CEBU, a branch of BAGUIO BECI language school with a 20-year history, is located in MACTAN NEW TOWN, a new city in Cebu.

B'CEBU is a community of students from various countries who study English with Filipino teachers and live together with different cultures, races, and ages. We welcome anyone who is looking for new experiences and differences, as well as a fast improvement in English proficiency and overseas living and travel experiences.

B'CEBU management prepares and manages a clean and safe living and classroom space.

B'CEBU teachers take pride in being instructors and prepare and deliver lessons to the best of their abilities.

B'CEBU's various club activities provide individuals with opportunities for English proficiency and experience, as well as a positive influence on cultural development within B'CEBU and the local community of Cebu.

The space and content are prepared.

Join B'CEBU community and respect different cultures and people, learn and live together.

Someone may improve their English skills through living abroad, which they have dreamt of.

Someone may upgrade themselves for their next goal in life.

Someone may take a break from the hustle and bustle and recharge their mind and body.

We will do our best to make the time spent at B'CEBU a valuable time in your life.

B' CEBU HIGHLIGHTS

1



B' CEBU COMMUNITY

EXPANSION OF HISTORY



2

3



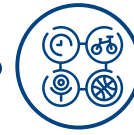
CLUB ACTIVITIES

PRE ONLINE INTERVIEW



4

B' CEBU HIGHLIGHTS



B' CEBU COMMUNITY

Various socialization activities to foster friendships and practice English for faster improvement.

In B' Cebu, everyone has a role to play within the community. As students, they are expected to study hard and we will provide them with the necessary support. However, we also recognize the importance of building relationships and connections beyond the classroom. Therefore, members of B' Cebu community will engage in various socialization activities.

- Outreach programs
- Volunteer work
- Socialization events (within the campus)

EXPANSION OF HISTORY

Cafe Campus - Sparta Campus - City Campus and B' Cebu Campus

API BECI opened in 2002 in Baguio, the summer capital of the Philippines, and has now been in operation for over 20 years. API BECI continuously grows through embracing new challenges and making new attempts based on their understanding and passion for study in the Philippines. In 2023, we will begin the expansion of our history with the new B'Cebu campus located in a newly built building in Mactan Newtown. It is the new center of Mactan Island, a hub for travel in Cebu, Philippines, surrounded by international airports and famous resorts. With years of expertise, we have prepared a cleaner and safer campus, as well as an efficient curriculum and innovative programs verified by numerous API BECI graduates. Look forward to the next chapter of history to be written in the name of B'Cebu.

CLUB ACTIVITIES

We have prepared various club activities to make fun-filled learning experience.

To enhance the students' overall experience, we have arranged a variety of club activities. These activities are designed to be enjoyable and engaging, and most importantly, they will provide students with ample opportunities to use English as their primary mode of communication. English will be the language used during these activities, giving students the chance to practice and improve their language skills while having fun with their peers. The activities also provide an opportunity for students to make new friends and build their confidence in using English.

PRE-ONLINE INTERVIEW

We care for our students from the very beginning. Hence, a virtual interview is conducted for students to prepare for their language study in the Philippines.

Prior to arrival in the Philippines, an interview will be conducted via skype/ zoom. Through this interview, students can receive an interview result consisting of the teacher's advice to prepare students for their English journey in the Philippines. Likewise, we ensure that the school is fully prepared for their arrival and can make all necessary arrangements in advance, including class schedules and textbook selection. It is typically comprised of surface-level questions to gain understanding of the students on the following aspects:

- Basic Information
- Learning Goals
- English Level
- Study Plan

B' CEBU CURRICULUM

Although we learned English in our home country for a long time and had access to affordable and diverse ways to study English, we decided to invest more time and resources for language training in the Philippines because what we really need is not to study English but to speak English.

We want to speak English and we know the best way to speak English based on our experience of how we acquired our mother tongue. The best way is to expose ourselves in an environment where everyone speaks in English, to speak in English as much as possible and to pile up our learning experiences in speaking English. Therefore, B' Cebu prepared a curriculum for studying English and club activities for speaking English.

The goal of our curriculum is to let our students keep their interest in English even after going back in their respective countries.



COURSE	CURRICULUM	TARGET STUDENTS
Speed ESL	4 1:1 classes 1 Group Class 1 Club Activity 2 Night Classes (Optional)	Basic to Advanced students
Intensive ESL	6 1:1 classes 1 Club Activity 2 Night Classes (Optional)	Basic to Advanced students who want to have more MTM class
IELTS	Pre IELTS 4 1:1 classes 2 Group Classes 2 Mock Tests	Students who are unfamiliar with IELTS and is planning to prepare for in-depth study of IELTS exam
	IELTS Guarantee 4 1:1 classes 2 Group Classes 2 Mock Tests	Students who will take the official IELTS exam for study or work abroad
8W Working Holiday Preparation Course	4 1:1 classes 2 Group Classes	Students who will go on a working holiday Students who wants to focus on basic skills (e.g. Restaurant vocabulary)
Junior ESL	6 1:1 classes	Junior students (below 17yrs old)
Lite ESL	4 1:1 classes	Students who prefer a less hectic schedule

SPEED ESL

Speed ESL is the signature course of BECI given its longest history among the programs offered in the campuses. It is also chosen highly by students who are determined to have a language training and come to BECI in the Philippines. This course aims to develop students' language core skills (Speaking, Reading, Writing, Listening) to communicate fluently and confidently in English. It also aims to help students apply language skills in a range of social or professional settings leading to more career opportunities and wider network.



TIME	CLASS TYPE	SUBJECT
07:00 – 07:50		BREAKFAST
08:00 - 08:30	Optional Class	DAILY VOCA PRON TRAINING
09:00 - 09:45	1:1 Class	SPEAKING CLASS
10:00 - 10:45	1:1 Class	READING CLASS
11:00 - 11:45	Group Class	CLUB ACTIVITY
12:00 - 13:00		LUNCH
13:00 - 14:00		BREAK
14:00 - 14:45	1:1 Class	WRITING CLASS
15:00 - 15:45	Group Class	LISTENING CLASS
16:00 - 16:45	1:1 Class	VOCABULARY CLASS
17:00 - 18:00		BREAK
18:00 - 19:00		DINNER
19:00 - 19:45	Optional Class	DAILY VOCA WRITING TRAINING
20:00 - 20:45	Optional Class	PATTERN ENGLISH



- Reading
- Speaking
- Writing/ Grammar
- Vocabulary/ Speaking



- GC 1 : CLUB ACTIVITY**
GC 2: Any of the following:
- Group Discussion
 - Group Listening
 - Grammar Speaking



- You can choose from the following:**
- Vocabulary Class
 - Sound Right!
 - Grammar in Context
 - Pattern English

ENTRY LEVEL

- ✓ It is open to students of all levels (Foundational to Advanced).

KEY FEATURES:

- ✓ It covers all macro skills of English, so you can develop your skills on all the areas of the English language.
- ✓ You can practice and learn with peers with a variety of group classes to choose from.
- ✓ The course includes an optional Vocabulary Class.

INTENSIVE ESL

With more classes, this program allows students to progress as rapidly as possible. In addition, the classes assigned provide a variety of learning experiences that contribute to prompt improvement in English proficiency.



TIME	CLASS TYPE	SUBJECT
07:00 – 07:50		BREAKFAST
08:00 - 08:30	Optional Class	DAILY VOCA PRON TRAINING
09:00 - 09:45	1:1 Class	SPEAKING CLASS
10:00 - 10:45	1:1 Class	READING CLASS
11:00 - 11:45	Group Activity	CLUB ACTIVITY
12:00 - 13:00		LUNCH
13:00 - 13:45	1:1 Class	SPEAKING CLASS
14:00 - 14:45	1:1 Class	WRITING CLASS
15:00 - 15:45	1:1 Class	LISTENING CLASS
16:00 - 16:45	1:1 Class	VOCABULARY CLASS
17:00 - 18:00		BREAK
18:00 - 19:00		DINNER
19:00 - 19:45	Optional Class	DAILY VOCA WRITING TRAINING
20:00 - 20:45	Optional Class	PATTERN ENGLISH



- Reading
- Speaking
- Writing/ Grammar
- Vocabulary
- Listening
- Speaking



Students can choose from a variety of club activities.



You can choose from the following:

- Vocabulary Class
- Sound Right!
- Grammar in Context
- Pattern English

ENTRY LEVEL

✓ It is open to students of all levels (Foundational to Advanced).

KEY FEATURES:

- ✓ It covers all macro skills of English, so you can develop your skills on all the areas of the English language.
- ✓ With more 1:1 classes, you can have a personalized corrective feedback. Also, you can practice conversation more and freely express your thoughts.
- ✓ The course includes an optional Vocabulary Class.

IELTS

- PRE IELTS
- IELTS GUARANTEE

Pre IELTS Course is structured so that learners who are unfamiliar with the IELTS test can build basic IELTS skills and become familiar with the test type.

IELTS Guarantee Course is designed to thoroughly prepare you for the official IELTS exam. It is structured step by step for learners to effectively acquire the English skills and techniques required to get IELTS test scores. The program is tailored to the type of test you have (Academic or General) and guarantees a goal score based on your entry scores.



- Reading
- Speaking
- Writing
- Listening



- Listening
- Speaking



- Mock Tests

TIME	CLASS TYPE	SUBJECT
07:00 – 07:50		BREAKFAST
08:00 - 09:00		BREAK
09:00 - 09:45	1:1 Class	IELTS LISTENING
10:00 - 10:45	1:1 Class	IELTS READING
11:00 - 11:45	Group Class	SPEAKING CLASS
12:00 - 13:00		LUNCH
13:00 - 14:00		BREAK
14:00 - 14:45	1:1 Class	IELTS WRITING
15:00 - 15:45	Group Class	LISTENING CLASS
16:00 - 16:45	1:1 Class	IELTS SPEAKING
17:00 - 18:00		BREAK
18:00 - 19:00		DINNER
19:00 - 19:45	Group Class	Mock Test
20:00 - 20:45	Group Class	Mock Test

IELTS GUARANTEE (CLASS BENEFITS)

✓ Full tuition waiver until the guaranteed score is reached. (However, you will be responsible for the cost of stay with meals ex. visa, dormitory, textbooks, and utility bills, etc.)

✓ One official exam will be provided

IELTS GUARANTEE CONDITIONS

✓ Guarantee class students lose their qualification for the guarantee course with one warning.

3 tardiness = 1 warning

1 absence = 1 warning

✓ You must take the mock test (2 hours) every evening

✓ You must take the official exam within 12 weeks.

GUARANTEE COURSE LEVEL

ENTRY SCORE	GUARANTEE SCORE
4.0	+ 5.5 up
5.0	+ 6.0 up
6.0	+ 6.5 up
6.5	+ 7.0 up

Pre IELTS and IELTS Guarantee Course are designed the same. When the students do not yet hold an IELTS score, they can take BECI IELTS mock test and will be assigned to the class according to the mock test result.

8W WORKING HOLIDAY PREPARATION COURSE

This course emphasizes helping students who aim to venture on a working holiday abroad. This course stresses vocabulary and expression buildup to enhance students' practical intelligibility and communicability through in-depth language practice. On top of that, students will take skill-based activities such as role-playing, community [school] immersion, and accent training to sharpen their skillset and boost their confidence.



- Reading
- Speaking
- Writing
- Listening



- Listening
- Speaking



You can choose from the following:

- Vocabulary Class
- Sound Right!
- Grammar in Context
- Pattern English

TIME	CLASS TYPE	SUBJECT
07:00 – 07:50		BREAKFAST
08:00 - 08:30	Optional Class	Daily Vocabulary Pronunciation Training
09:00 - 09:45	1:1 Class	READING CLASS
10:00 - 10:45	1:1 Class	LISTENING CLASS
11:00 - 12:00		BREAK
12:00 - 13:00		LUNCH
13:00 - 14:45	1:1 Class	SPEAKING CLASS
14:00 - 14:45	1:1 Class	WRITING CLASS
15:00 - 15:45	Group Class	LISTENING CLASS
16:00 - 17:45	Group Class	SPEAKING CLASS
17:00 - 18:00		BREAK
18:00 - 19:00		DINNER
19:00 - 20:45	Optional Class	Daily Vocabulary Writing Training
20:00 - 21:45	Optional Class	Sound Right!

RECOMMENDED TO STUDENTS WHO :

- ✓ want to improve their basic English skills for their working holiday
- ✓ want to learn English through dialogue practice and practical applications
- ✓ need to practice job interviews, write resume and cover letter

OBJECTIVE:

- ✓ expand Aussie vocabulary and expressions (especially slangs, humour, and innuendos)
- ✓ develop fluency in the use of varied grammatical structures
- ✓ use focused and general listening skills to understand more complex small talk and longer speech in native speakers' day-to-day conversations, TV shows, radio shows, job interviews, doctor's appointments, etc.
- ✓ be aware of phonological and phonetic knowledge of the standard English language

EXPECTED SIMULATION ACTIVITIES:

- ✓ Job Interviews
- ✓ Taking orders at a restaurant
- ✓ Small talk with strangers
- ✓ Selling items / Bargaining



JUNIOR ESL

It offers a customized curriculum to cater to students from 17 and below. This course provides a solid foundation in English language proficiency by focusing on key language skills such as speaking, listening, reading, and writing using engaging activities. Also, it focuses on acquiring basic grammar structures and building vocabulary, with the purpose of developing their conversation skills.



- Reading
- Speaking
- Writing
- Vocabulary
- Listening
- Grammar

ENTRY LEVEL:

- ✓ It is open to students of all levels (Foundational to Advanced).

KEY FEATURES

- ✓ Teachers assigned have undergone specialized training to be more equipped in the necessary skills in teaching junior students.
- ✓ Instructional materials and textbooks are customized to cater to the needs of junior students.
- ✓ Topics discussed in class are age-appropriate and are not only essential for their English lessons and their other school subjects, but also for all areas of life beyond their education.

Topics discussed in class are age-appropriate and are not only essential for their English lessons and their other school subjects, but also for all areas of life beyond their education.



- Reading
- Speaking
- Writing
- Listening

ENTRY LEVEL:

- ✓ It is open to students of all levels (Foundational to Advanced).

KEY FEATURES

- ✓ With limited classes a day, you can have more free time to do homework and study lessons discussed in class.
- ✓ It also covers all macro skills of English, so you can develop your skills on all the areas of the English language.

LITE ESL

It is a course designed for students who would like to enjoy a less hectic schedule while studying English. With a more relaxed pace of learning and flexible class time, students can study at their own pace and convenience. Moreover, this course enables students with a busy lifestyle to prioritize other commitments without compromising their English language learning.

DAILY VOCABULARY

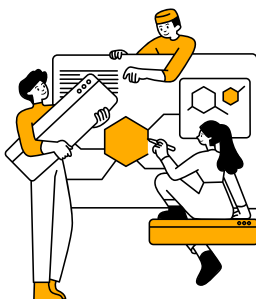
DAILY VOCA PRON TRAINING (Morning) Monday - Thursday



Every morning, students will be gathered at the main hall for a daily morning pronunciation practice. Here, students are given a list of 10 words to pronounce under the supervision of a pronunciation expert.

During the Daily Voca Writing Class, students will be required to accomplish writing activities based on English level.

Every Friday, a vocabulary test will be conducted to test the students understanding of vocabularies learned for the week.



DAILY VOCA WRITING TRAINING (Night) Monday - Thursday



Students will be divided into groups according to English level. They will take the classes using the vocabulary list given every morning.

- Beginner Level: An essay with some blanks will be filled out by students using the vocabulary given in the morning.
- Intermediate Level: Students will be required to paraphrase an essay using the words given in the morning.
- Advanced Level: Students will be required to compose an essay using the words given in the morning.



CLUB ACTIVITIES

JOURNALIST CLUB

In this club, students will have the opportunity to practice English in an experiential context by running the weekly school newspaper. They will write varied kinds of articles (news, feature, reviews, columns) through investigation, interviews, or research.



INFLUENCER'S CLUB

Digital skills is a must nowadays. With this in mind, students will be creating contents which will be officially posted on the school's official social media accounts such as Facebook; YouTube; Instagram and Tiktok. You can check outputs and get updated by following these accounts:



COMMUNITY SERVICE CLUB

Students who are interested in performing charitable works are welcome in this club. It is a great avenue to develop social skills and get to understand more of the local people and culture. What's more? It is a rewarding activity as it helps the local people in different meaningful ways.



SPEECH AND DEBATE CLUB

This club gives students a fun way of developing their language abilities through public speaking activities. The club could also help students to become more informed about political and global affairs or provide a venue for students to improve their overall communication skills.



ENTREPRENEUR'S CLUB

Students discover and explore their passion for business through a wide range of business-related simulation activities. Students can improve language skills that are useful in an office or other business environments and have more opportunities to learn and apply professional vocabulary with peers.



SPORTS CLUB

Through this club, students not only stay physically active but also improve their language skills through socializing and collaborating with their peers in a sportive fun and supportive environment.



PRE- ONLINE INTERVIEW

We care about you even before you start.

PROCEDURE OF THE INTERVIEW

Upon enrollment, we will set an interview schedule.

Take the interview for 15 minutes via skype or zoom

Based on the results of the interview, we will create a study plan for you.

You will receive the results of the interview which includes detailed comments on your speaking skill, diagnosis as well as recommended curriculum and club activity.

We conduct pre-online interviews so you can prepare well before coming to the Philippines and to ensure a clear and direct path towards your goal in improving your English skills. At the same time, we want to be prepared for you. We will arrange possible classes and textbooks that you might need.

INTERVIEW RESULT



PERSONAL INFORMATION

First Name :
 Nationality : Exam Date :
 Gender : ☐ Male ☐ Female
 Evaluator :

ASSESSMENT

LEVEL DESCRIPTOR

- Can understand sentences and frequently used expressions related to areas of most immediate relevance (e.g. very basic personal and family information, shopping, local geography, employment).
- Can communicate in simple and routine tasks requiring a simple and direct exchange of information on familiar and routine matters.
- Can describe in simple terms aspects of his/her background, immediate environment and matters in areas of immediate need.

OVERALL SPEAKING LEVEL

A2

Elementary Level

You will be assessed on your English level according to different language areas.

B' Cebu Campus follows the CEFR level which is as follows: F, A1, A2, B1, B2, C1, C2.

SKILL AREA	COMMENT	RECOMMENDATION
Grammar and Vocabulary	Agustina uses a range of simple grammatical forms and attempts some complex ones, e.g. 'the people are going sightseeing maybe in the jungle or somewhere, so they are in a different context ...'; '... so there are two different ways of enjoying the animals'.	<ul style="list-style-type: none"> Study basic sentence patterns to be able to construct longer and accurate sentences. Memorize more vocabulary in order to respond to questions with more details.
Discourse Management	In terms of Discourse Management, she contributes to the discussion and uses a range of cohesive devices, e.g. 'but I think that another good idea would be this air balloon because...'. She could improve her fluency; if she hesitated less, she would be able to show more of her English in the limited time available.	<ul style="list-style-type: none"> Practice speaking more confidently and smoothly by participating in more conversations with native English speakers, taking language classes or practicing with a language exchange partner. By improving your fluency, you will be able to express your ideas more clearly and effectively during discussions and showcase your language skills more fully within the limited time available.
Pronunciation	Angela's Pronunciation is generally intelligible, even though there are sometimes errors with: sentence stress, e.g. 'two (unstressed) different ...'; individual sounds, e.g. the sound /h/ in 'hotel', 'house', 'animals' and groups of consonants, e.g. 'guesses'; and often rising intonation at the end of sentences.	<ul style="list-style-type: none"> Practice stress patterns by repeating sentences out loud, emphasizing different words each time. You can also try recording yourself to listen back and identify any areas where you need to improve.

During the interview, we will check on how well you do on the following language areas:

- Grammar and Vocabulary
- Discourse Management
- Pronunciation
- Interactive Communication
- Global Achievement

You will receive detailed comments and suggestions based on your given answers.



Interactive Communication	Agustina communicates her ideas well, responds to her partner and moves the discussion forward. She could develop the interaction a little more, especially in Part 3.	<ul style="list-style-type: none"> Practice active listening. Pay attention to what the other person is saying, ask questions, and respond appropriately. Further, speak clearly and avoid using long-winded sentences. Get to the point and make sure that your message is understood.
Global Achievement	Agustina uses mostly accurate language which is appropriate for the tasks. She produces extended language to express her ideas in a clear way.	<ul style="list-style-type: none"> Keep up the good work but stay curious. Maintain a sense of curiosity and a desire to learn. Read widely, explore new ideas, and stay up-to-date with developments in the English language.

RECOMMENDATIONS:

OVERALL COMMENT		
STRENGTHS	WEAKNESSES	RECOMMENDATION
<ul style="list-style-type: none"> The student shows perseverance in answering given questions. 	Lack of Vocabulary	It is recommended that you bring extra vocabulary books before coming to the Philippines to study on your free time.
	Inaccurate Grammar	At least one class is recommended focusing in grammar.

This is a summary of the interview result which shows what skills you need to focus on.

RECOMMENDED CURRICULUM

As per diagnosis, the student needs to focus on Speaking Class. Hence, the following class schedule is recommended:

2 Speaking MTM Class
 1 Reading MTM Class
 1 Grammar MTM Class

RECOMMENDED CLUB ACTIVITY

Based on the consultation, we recommend the following club activities

- Journalism Club
The student is interested in writing and has some experience in writing for a newspaper. Hence, this club is recommended.
- Speech and Debate Club
The student has sufficient vocabulary to hold a debate.

During the interview, we will get to know you better. We will know your personality, preferences and language needs so we can recommend a club activity which will be most suitable for you.

Based on the diagnosis during the interview, we will recommend which classes you need to take. Final schedule will be arranged once you take your full entry test upon your arrival in the Philippines.

How does MTM class work?

MTM SPEAKING CLASS

01
STEP

First, the student will check out the vocabulary list to check unfamiliar words. The teacher will then give some examples and the student will try to understand based on how it was used in the sentence.

Teacher: Let's try to use the word diminish. The medicine caused my headache to diminish. What do you think is the meaning of the word?

Student: I think it means to like ... be gone?

02
STEP

Next, the teacher will be giving synonyms and other examples so the student can try to use it on her own.

Teacher: It also means 'to disappear, to become lesser, smaller or weaker. As a verb so you can use it like:

Time will not diminish our friendship.
Subject + Verb + Object

VOCABULARY BANK

Diminish
Socialize
Excessive
From one's point of view
Separated by great distance
Since the dawn of sth
Compensate
Contrary to sth/ sb
Rob
It's without a doubt that

TOPIC 1

CELLPHONES: BOON OR BANE?

GETTING READY!

Direction: Answer the following questions.

1. How often do you talk to your family in person? Why?
2. Who do you send SNS every day?

READ IT UP!

Direction: Read and understand the passage.

Since the dawn of cellphones, more and more people such as families and friends who are separated by great distances are using them to compensate for their absence. It's without a doubt that cellphones have a lot of boons as they are designed not only to bring us closer, but also make our lives comfortable.

Contrary to that, as we can observe nowadays, this device is robbing our time to really connect with people. We are relying too much on our phones that we forget to socialize or even talk to our family and friends in person. Besides, excessive usage of devices diminishes the true value of open communication. From your point of view, cellphones: boon or bane?

SPEAK UP!

Direction: Answer the following questions using the learned vocabularies.

1. According to the reading, what are the boons and banes of using cellphones? Do you agree on them? Why? Why not?
2. What is the meaning of the highlighted sentence? Explain by giving examples.
3. From your perspective, what are the boons and banes of cellphones aside from what is mentioned in the passage? Give two each.

Sparta Speaking 1 3

This is an excerpt from TIC TALK 2.

03
STEP

As a preview, the teacher asks some warm up questions about the topic.

04
STEP

The student has to read the passage. While reading, the teacher takes note of mispronounced words. Afterwards, the teacher corrects the words and read it while student listens.

Teacher: To make the L, the tongue comes forward, and the tip of the tongue presses against the roof of the mouth just behind the teeth, or sometimes comes through the teeth. To make the R sound, the tip of the tongue is down while the back/mid part of the tongue raises.

Practice it with words:
Right light
Far fall
Breach bleach
Crown down



05
STEP

After checking pronunciation, the student will share understanding of the passage and discuss it with the teacher.

06
STEP

To use vocabulary learned and check understanding, follow up questions will be discussed.

NOTE:

During conversations, there will be corrective feedbacking. This means, errors committed in pronunciation, vocabulary and grammar will be corrected. The student should take note for better retainment and faster improvement.



1:1 CLASSROOM



PRESENTATION ROOM






GROUP CLASSROOM



MAIN HALLWAY

ACADEMIC BUILDING

	GROUP CLASSROOMS		LIBRARY
	1:1 CLASSROOMS		INFORMATION DESK
	PRESENTATION ROOM		ADMIN OFFICE



LIBRARY



INFORMATION DESK



ADMIN OFFICE

DORMITORY

ROOM TYPES

SINGLE ROOM



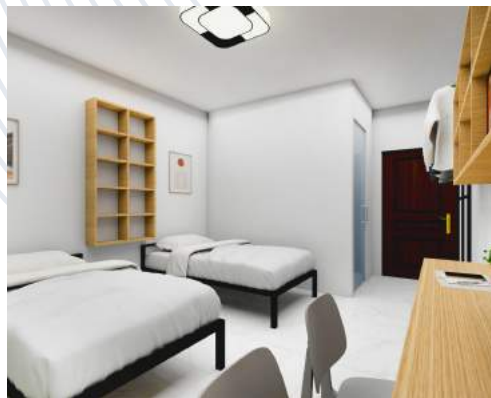
TWIN ROOM



TWIN + LIVING ROOM



QUAD ROOM



SINGLE ROOM

TWIN ROOM

TWIN + LIVING ROOM

QUAD ROOM

FACILITIES



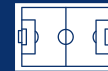
SWIMMING POOL



FITNESS GYM



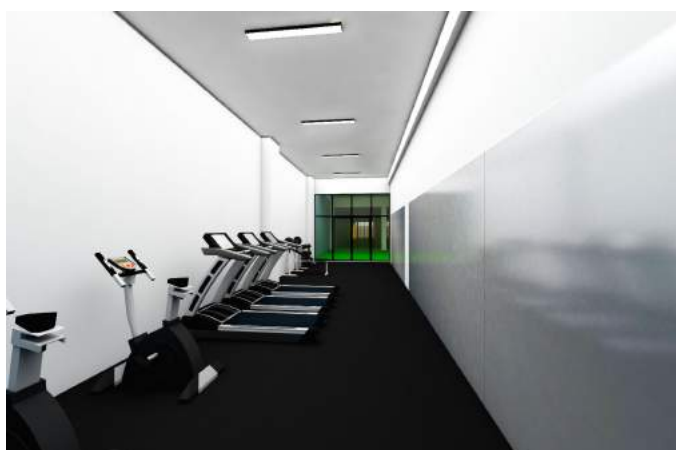
DINING HALL



PLAYGROUND



DAYCARE CENTER





	<ul style="list-style-type: none"> • SM SEASIDE MALL • GAISANO MACTAN ISLAND MALL 	<ul style="list-style-type: none"> • SM CITY PARK • GAISANO GRAND MALL MACTAN
	<ul style="list-style-type: none"> • AYALA CENTER PARK • CEBU IT PARK 	<ul style="list-style-type: none"> • MACTAN SHRINE • FORT SAN PEDRO
	<ul style="list-style-type: none"> • DUSIT THANI • SHANGRI-LA MACTAN CEBU • JPARK ISLAND RESORT 	<ul style="list-style-type: none"> • REEF ISLAND • CRIMSON RESORT
	<ul style="list-style-type: none"> • WATSONS MACTAN • ROBINSONS EASYMART MACTAN • STARBUCKS COFFEE 	<ul style="list-style-type: none"> • H MART ASIAN GROCERY • MERCATO DE MACTAN FOOD PARK • LG GARDEN WALK
	<ul style="list-style-type: none"> • MACTAN INTERNATIONAL AIRPORT 	