

P R E M I U M E N G L I S H C E N T E R

JOYFUL

2025 ENGLISH

T-SHINE HOTEL CAMPUS, MACTAN
CEBU, PHILIPPINES



EVERY SUMMER BRING DIFFERENT STORIES THAT YOU WILL NEVER FORGET



CONTENTS

JOYFUL CENTER

- 03 Map of Joyful Center
- 04 Introduction of the Center
- 08 Photos of the Joyful Center
- 10 Hotel Room
- 12 Hotel Services
- 13 Joyful Calendar

JOYFUL PROGRAM

- 14 ESL
- 15 ESL LIGHT
- 16 ESL CAREERLINK
- 18 POWER SPEAKING
- 19 TOEIC SPEAKING
- 20 IELTS SPEAKING
- 21 TARGET IELTS
- 22 FAMILY PROGRAM

JOYFUL ACTIVITY

- 24 Activity Schedule
- 25 Various Activities
- 27 Activity Photo

CHECKLIST

- 28 Checklist
- 30 Regulations



GYM
SHINE SPA

CEBU CITY



AYALA
CENTER CEBU



SM SEASIDE
SHOPPING MALL



NUSTAR
RESORT & CASINO



IL CORSO MALL

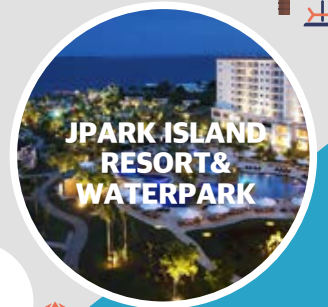


MACTAN CEBU
INTERNATIONAL
AIRPORT

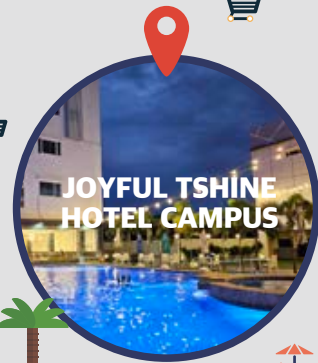


GOLF

LAPU-LAPU CITY



JPARK ISLAND
RESORT &
WATERPARK



JOYFUL TSHINE
HOTEL CAMPUS



MALL



PLANTATION BAY
RESORT & SPA

Mactan island

JOYFUL TSHINE HOTEL CAMPUS

- 5MINS TO BEACH
- 20MINS TO AIRPORT
- 20MINS TO SHOPPING MALL

OLANGO ISLAND



WELCOME TO **JOYFUL PREMIUM EDUCATION CENTER!**

Joyful Premium Education Center, led by a team with over ten years of experience in Philippines language schools, integrates all their know-how to provide students with the highest quality English education services based on their rich experience and expertise. The center adheres to strict standards for selecting teachers and developing education programs to ensure the best education quality.

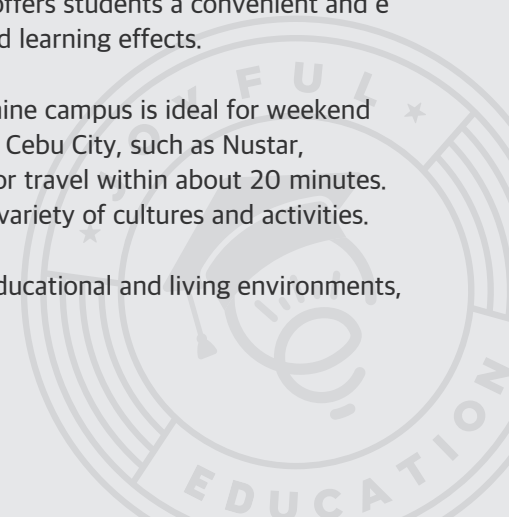
Students have expressed high satisfaction with the teaching methods and the professionalism of the teachers at Joyful Premium Education Center, leading to rapid improvement in their English abilities.

Particularly, the center has developed a variety of English courses specialized in speaking, which are ideal for efficiently improving skills in a short period.

Tshine campus of Joyful Premium Education Center, a newly constructed hotel in 2022, boasts clean and neat facilities. The Joyful Education Center building, situated within the hotel premises, enables convenient and safe walking access from the hotel to the academy, fostering an environment conducive to focusing on lessons. Students can comfortably use hotel facilities throughout their training period, including a swimming pool, fitness center, kids' room, massage shop, and cafe, enjoying full hotel services. This offers students a convenient and enriching living environment, helping them to enjoy perfect rest and maximized learning effects.

Located near famous resorts such as Jpark Resort and Plantation Bay, the Tshine campus is ideal for weekend leisure. Additionally, it provides excellent accessibility to the bustling areas of Cebu City, such as Nustar, SM Seaside Mall, and IL Corso, via the unique Newbridge Highway, allowing for travel within about 20 minutes. This geographical advantage offers students the opportunity to experience a variety of cultures and activities.

Joyful Premium Education Center is continually striving to provide the best educational and living environments, enabling students to learn and apply English more effectively.





01 PREMIUM ENGLISH CENTER IN THE HOTEL

Hotel-based English training is a new language training model that adds leisure and elegance to the training experience, providing a premium lifestyle space. Joyful Education has created the optimal environment for students to relax in a hotel and study English.

02 FEMALE FRIENDLY CAMPUS

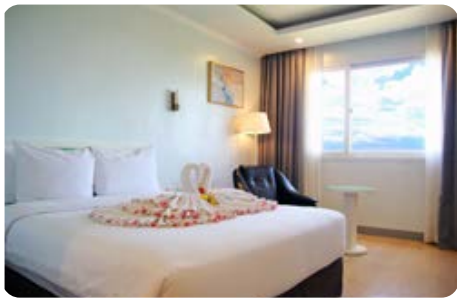
Joyful Education Center promotes female-friendly language training as a new model for English center.

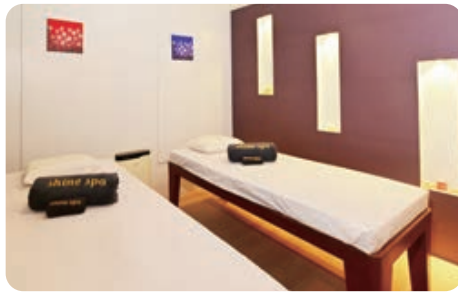
We provide various services such as shuttle bus service, safe call taxi service and diet meals (various salads and fruits) so that female students of various ages can live safely and healthily in a pleasant hotel with convenient facilities and enjoy studying English.


03 CAREER-ORIENTED EDUCATION EXPERTS


The Joyful Education management team at the Philippine language academy, made up of career-oriented education experts, boasts over 10 years of experience. We deliver the utmost trust and precisely identify the needs of our students, offering the crucial services required for language training.









 **Swimming Pool**
8am-9pm


 **Restaurant**
Breakfast, Lunch, Dinner

 **Cafe**
6am-9pm

 **Massage&Spa**
10am-11pm

 **Gym**
6am-10pm

 **Rooftop Bar**
12nn-11pm

 **Kids Room**
9am-10pm

 **English Library**
9am-10pm

HOTEL ROOM

Clean and comfortable rooms, a cozy and safe environment

DELUXE ROOM 25sqm, Studio type

Good for 2/3 persons room
2/3 Single beds or Queen bed

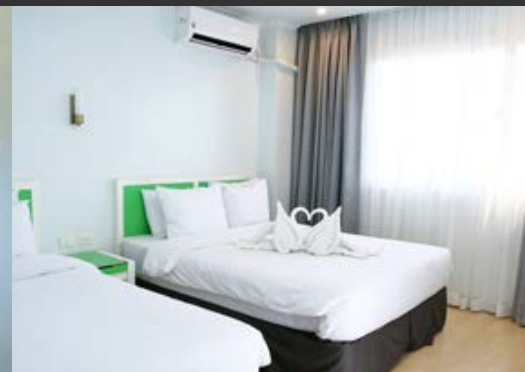
Sofa and Table, Mini-fridge, Storage cabinet,
40inch TV and Cable channels,
Inverter air conditioner, Towels, Coffee pot, Safe,
Premium mattresses and bedding, Storage cabinet,
Shoe rack, Hair dryer and amenities provided/refilled



FAMILY ROOM 48sqm, 1 bedrooms

Good for 4/5/6 persons room
2/3 queen beds, spacious living room

Sofa and table for 4-5persons, Mini-fridge,
40inch TV and Cable channels,
Inverter air conditioner(room/living room),
Premium mattresses and bedding, Storage cabinet,
Towels, Coffee pot, Safe, Shoe rack,
Hair dryer, Amenities provided/refilled



HOTELER

※ For family rooms, VIP1, and VIP2, additional beds are added depending on the number of people (4~6 people).
※ For safety, cooking in the guest rooms is strictly prohibited according to hotel regulations and you will be immediately evicted. In addition, if the emergency alarm is activated due to the use of cooking utensils, damages to all rooms may be claimed.

VIP 1 70sqm, 1 bedroom

Good for 4/5/6 persons room
2/3 queen beds, spacious living room

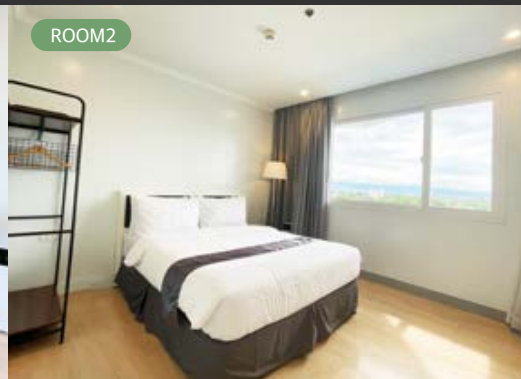
Sofa and table for 4-5persons, Sink, Fan(room,living room), Medium-sized refrigerator(separate freezer), Microwave, 40inch TV and Cable channels, Storage cabinet, Towels, Inverter air conditioner(room/living room), Shoe rack, Air purifier (room/living room), Hair dryer, Coffee pot, Safe, Premium mattresses and bedding, Amenities provided/refilled



VIP 2 70sqm, 2 bedrooms

Good for 4/5/6 persons room
2/3 queen beds, spacious living room

Sofa and table for 4-5persons, Sink, Fan(room,living room), Medium-sized refrigerator(separate freezer), Microwave, 65inch smart TV and Cable channels, Storage cabinet, Towels, Inverter air conditioner(room/living room), Shoe rack, Air purifier (room/living room), Hair dryer, Coffee pot, Safe, Premium mattresses and bedding, Amenities provided/refilled

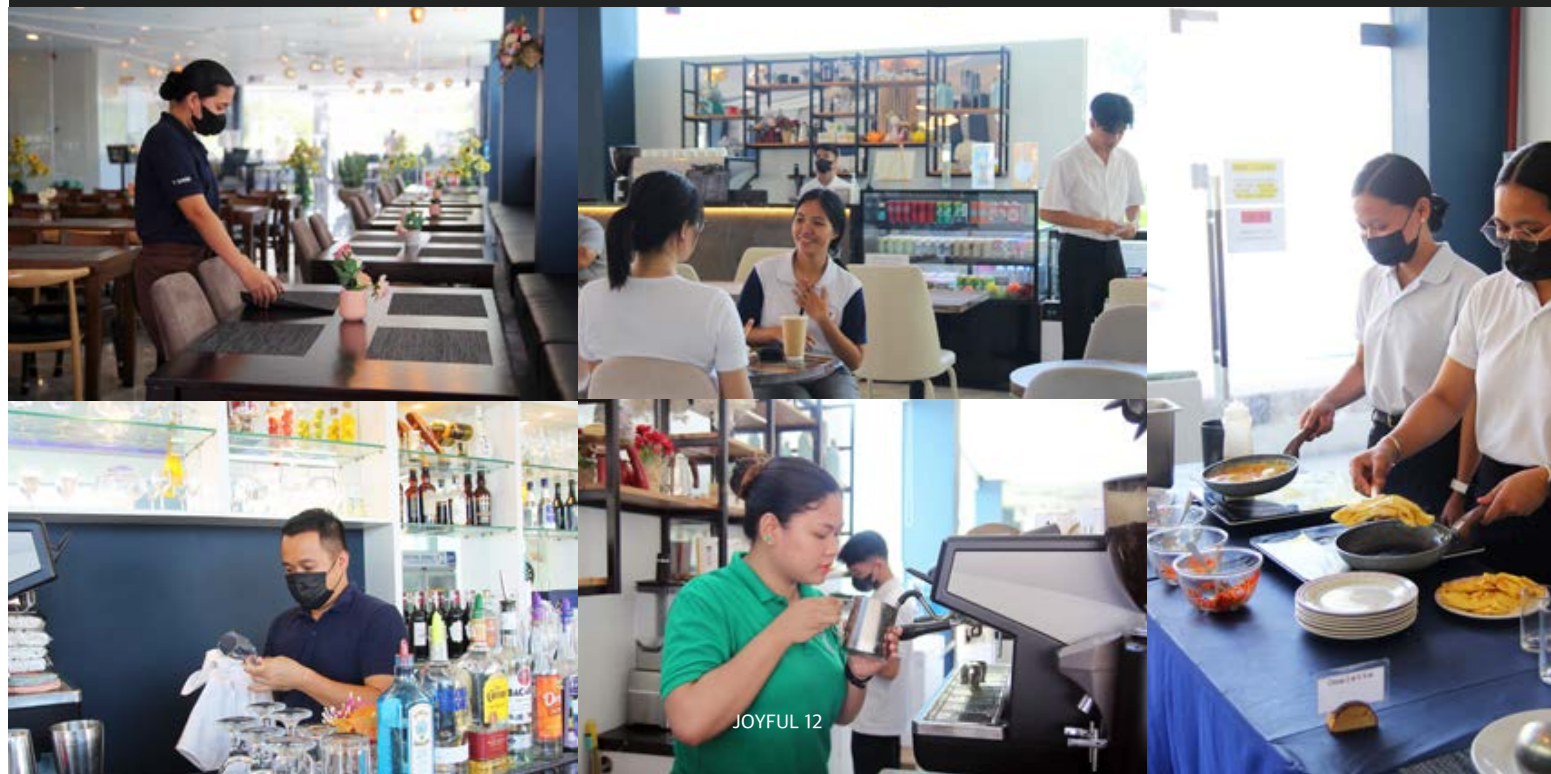


HOTEL SERVICE

Premium English program with friendly and comprehensive services

In the hotel, there are abundant opportunities to use English in everyday situations, and communication with hotel staff can enhance practical English skills in real-life scenarios. Furthermore, specialized staff assigned to different departments prioritize students' convenience and safety. This serves as a unique distinguishing factor of the English training provided at the hotel.

- **Hotel Amenities:** Provides toothbrushes, toothpaste, shampoo, conditioner, body wash, soap, bottled water, tissues, and instant tea bags, and refills upon request.
- **Towel Replacement Service:** Replace towels daily with clean ones.
- **Cleaning Service:** Provides room cleaning and tidying twice a week to assist guests' convenience.
- **Bedding Replacement:** Offers a weekly full bedding replacement service.
- **Laundry Service:** Provides laundry service three times a week. (e.g., drop off on Monday, pick up on Wednesday)
- **Rental Service:** Offers air purifiers and fans for rent according to students' needs.
- **Food and Beverage:** Provides various food and beverages through our restaurant, rooftop bar, and cafe.
- **Fitness Facilities:** Offers facilities for relaxation and exercise, including a swimming pool, gym, and spa.
- **Concierge Service:** Provides various assistance such as travel and tourist information, reservations, and taxi calling.
- **Pool Lifeguard:** To ensure students' safety, lifeguards are stationed during pool operating hours (09:00-22:00) and offer rentals such as towels, goggles, and kick-boards.
- **Security Guard:** Security guards are stationed 24/7 to ensure safety inside the hotel and its surroundings and respond to emergencies.
- **Free Wi-Fi:** Offers wireless Internet for guests to conveniently use the Internet.
- **110V, 220V Common Use:** Voltage converters are not needed.
- **Shine Spa & Massage:** Enjoy relaxing massages at special discounted rates for Joyful students within the hotel.



ESL

1:1 CLASS
4 times (180mins)

1:4 CLASS
2 times (90mins)

Traning
EACH SKILL

Various
ACTIVITIES

Shortest Period Maximum Effectiveness

ESL course aims to improve your overall English skills.

Through 1:1 close care, you can expect maximum results in the shortest amount of time from basic to advanced English, and all areas are taught through personalized classes with a teacher.

In 1:4 group classes, discussions are held on a variety of topics under the systematic management of a dedicated teacher, providing an opportunity to maximize your English communication skills.



CURRICULUM

ESL	
06:30-10:00	BREAKFAST
08:40-09:25	1:1 Start-up A
09:30-10:15	1:1 Start-up A
10:25-11:10	1:4 Discussion
11:15-12:00	1:4 Discussion
11:30-13:00	LUNCH
13:00-13:45	1:1 Start-up B
13:50-14:35	1:1 Start-up B
14:45-15:30	Special Class or Free Time
15:35-16:20	
16:30-17:15	
17:20-18:05	
18:00-19:00	DINNER



SMART 4 SKILLS
Writing, Reading, Speaking, Listening

JOYFUL SKILLS
Group class

★ Golf/Yoga - Local registration and Payment

SMART 4 SKILLS
Writing, Reading, Speaking, Listening

LEARN & FUN
• Music, Pattern, Survival English
• Yoga, Golf, Shopping mall

★ 1:1 class can be added (additional charge)

LEVEL SYSTEM

CAMBRIDGE LEVEL	SCALE	
C2	Proficiency	200-230
C1	Advanced	180-200
B2	Upper-Intermediate	160-180
B1	Intermediate	140-160
A2	Pre-Intermediate	120-140
A1	Beginner	100-120
PRE A1	Starter	0-100

Textbooks

- Pearson Start-up
- Speakout

Contents

- Reading, Writing, Listening, Speaking
- Special Class
 - Music, Pattern, Survival English
- Free Time
 - Golf, Yoga, Shopping mall(Free shuttle bus)

INCLUDED	Admission fee, Tuition, Hotel room, Meals, Hotel amenities, Laundry, Housekeeping
NOT INCLUDED	Airport pick-up/drop-off, Visa extension fees, SSP, SSP I-card, Airfare, Travel insurance, Outdoor activities, Hotel service&maintenance fees

ESL LIGHT

1:1 CLASS
4 times (180mins)

FOR ALL AGE
Groups

CUSTOMIZED
Lessons

Various
ACTIVITY

Relaxation and English learning at the same time!

ESL LIGHT course provides the perfect opportunity to learn English while enjoying relaxation at the hotel. You can enjoy activities such as yoga, golf lessons/rounding, massages, and swimming before and after English classes to relax and recharge. Joyful Education provides shuttle service for external activities to ensure students' safety and convenience. All classes are conducted one-on-one, focusing on the four core areas of language learning. Students receive customized lessons tailored to their level, allowing them to participate in classes without stress regardless of age, and naturally acquire English skills to enjoy English in daily life.



CURRICULUM

ESL LIGHT	
06:30-10:00	BREAKFAST
08:40-09:25	1:1 Start-up A
09:30-10:15	1:1 Start-up A
10:25-11:10	1:1 Start-up B
11:15-12:00	1:1 Start-up B
11:30-13:00	LUNCH
13:00-13:45	Free Time
13:50-14:35	
14:45-15:30	
15:35-16:20	
16:30-17:15	
17:20-18:05	
18:00-19:00	DINNER

★ 1:1 lesson scheduled for four sessions in the morning

SMART 4 SKILLS
Writing, Reading, Speaking, Listening

★ Golf/Yoga - Local registration and Payment

ENJOY & RELAX
Golf, Yoga, Massage,
Shopping Mall

★ 1:1 class can be added (additional charge)

LEVEL SYSTEM

CAMBRIDGE LEVEL		SCALE
C2	Proficiency	200-230
C1	Advanced	180-200
B2	Upper-Intermediate	160-180
B1	Intermediate	140-160
A2	Pre-Intermediate	120-140
A1	Beginner	100-120
PRE A1	Starter	0-100

Textbooks

- Pearson Start-up
- Speakout

Contents

- Reading, Writing, Listening, Speaking
- Special Class
 - Music, Pattern, Survival English
- Free Time
 - Golf, Yoga, Shopping mall(Free shuttle bus)

INCLUDED	Admission fee, Tuition, Hotel room, Meals, Hotel amenities, Laundry, Housekeeping
NOT INCLUDED	Airport pick-up/drop-off, Visa extension fees, SSP, SSP I-card, Airfare, Travel insurance, Outdoor activities, Hotel service&maintenance fees

ESL CAREERLINK

1:1 CLASS
4 times (180mins)

ENGLISH SKILL
Care

HOTEL
Practical Learning

Hotel Internship
CERTIFICATE

Throughout your English learning journey, seize the unique chance for a hotel internship.

ESL CareerLink program aims to enhance English proficiency from basic to advanced levels. With the distinctive feature of Joyful Education, studying while staying at a hotel, it is designed to provide opportunities to gain practical hotel experience and receive relevant certificates. This program takes place at the T-SHINE Hotel where Joyful Education is located, and it is open to non-majors and majors alike. Improve your English communication skills through various experiences at the hotel while studying English, and enhance your competitiveness in the job market by participating in real-world tasks alongside professionals. An internship certificate is a bonus!



CURRICULUM

ESL CAREERLINK	
06:30-10:00	BREAKFAST
08:40-09:25	1:1 Start-up A
09:30-10:15	1:1 Start-up A
10:25-11:10	Hotel Internship
11:15-12:00	Hotel Internship
11:30-13:00	LUNCH
13:00-13:45	Hotel Internship
13:50-14:35	Hotel Internship
14:45-15:30	1:1 Start-up B
15:35-16:20	1:1 Start-up B
16:30-17:15	Free Time
17:20-18:05	
18:00-19:00	DINNER



SMART 4 SKILLS
Writing, Reading, Speaking, Listening

Hotel Management
Practical Experience
★ Golf/Yoga - Local registration and Payment

Hotel Management
Practical Experience

SMART 4 SKILLS
Writing, Reading, Speaking, Listening

Enjoy & Relax
Golf, Yoga, Massage, Shopping mall
★ 1:1 class can be added (additional charge)

LEVEL SYSTEM

CAMBRIDGE LEVEL		IELTS
C2	Proficiency	8.0-9.0
C1	Advanced	7.0-7.5
B2	Upper-Intermediate	6.0-6.5
B1	Intermediate	4.0-5.5
A2	Pre-Intermediate	0-3.5
A1	Beginner	-
PRE A1	Starter	-

Textbooks

- Pearson Start-up
- Speakout

Contents

- Reading, Writing, Listening, Speaking
- Special Class
 - Music, Pattern, Survival English
- Free Time
 - Golf, Yoga, Shopping mall(Free shuttle bus)

INCLUDED	Admission fee, Tuition, Hotel room, Meals, Hotel amenities, Laundry, Housekeeping
NOT INCLUDED	Airport pick-up/drop-off, Visa extension fees, SSP, SSP I-card, Airfare, Travel insurance, Outdoor activities, Hotel service&maintenance fees

5 STRENGTHS



English Program

Helps enhance English skills necessary for hotel work, based on everyday English



Practical Experience

Students can gain hands-on experience by working in various departments of the hotel.



Cultural Exchange

Learn and share cultures with students from various nationalities, forming an international network of relationships.



Networking

Provides an excellent opportunity to network with professionals within the hotel industry, potentially leading to future job opportunities.



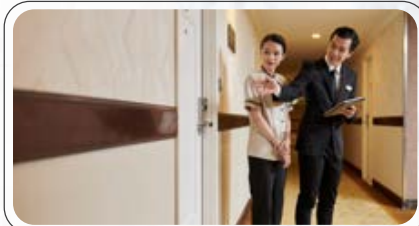
Internship Certificate

It can serve as a unique credential even for non-majors and can be helpful for those seeking employment in related industries.



Front Desk Training

- Introduction to basic principles and processes
- Learning procedures for room reservation, check-in, and check-out
- Practice scenarios for customer service and problem-solving
- Learning scenarios for reservation confirmation, payment processing, and room change



Room Service Training

- Introduction to types and processes
- Learning tasks such as room cleaning, room service, and facility maintenance
- Practice scenarios for reporting room status, handling requests, and managing customer feedback
- Practice scenarios for problem-solving



Food and Beverage Service Training

- Introduction to types and processes
- Learning tasks such as taking orders, serving, and processing payments
- Practice scenarios for customer service and handling order changes
- Learning scenarios for menu description, recommendations, and handling special requests



Hotel Facility Management and Operations Training

- Introduction to types of tasks and their importance
- Learning tasks such as facility maintenance, safety procedures, and facility reservations
- Practice scenarios for problem-solving and handling emergency situations
- Learning English conversation skills necessary for facility management



POWER SPEAKING

1:1 CLASS
6 times (270mins)

1:4 CLASS
2 times (90mins)

SPEAKING
specialized

Maximum
EFFICIENCY

DRAMATIC IMPROVEMENT IN SPEAKING

Power Speaking course aims to dramatically improve your speaking skills. 1:1 classes are held for 45 minutes in each area to learn essential speaking skills, and speaking-specific classes (Pronunciation, Accent, Fluency) are held for an additional 90 minutes. With this program, students can expect maximum results in a short period of time.

In 1:4 group classes, discussions are held on a variety of topics under the systematic management of a dedicated teacher, providing an opportunity to maximize your English communication skills.



CURRICULUM

POWER SPEAKING	
06:30-10:00	BREAKFAST
08:40-09:25	1:1 Start-up A
09:30-10:15	1:1 Start-up A
10:25-11:10	1:1 power Speaking
11:15-12:00	1:1 power Speaking
11:30-13:00	LUNCH
13:00-13:45	1:1 Speakout B
13:50-14:35	1:1 Speakout B
14:45-15:30	Special Class
15:35-16:20	
16:30-17:15	1:4 Discussion
17:20-18:05	1:4 Discussion
18:00-19:00	DINNER



SMART 4 SKILLS
Writing, Reading, Speaking, Listening

SPEAKING PLUS
Power Speaking

SMART 4 SKILLS
Writing, Reading, Speaking, Listening

LEARN & FUN
Music, Pattern English, Survival English

JOYFUL SKILLS
Group Class

★ 1:1 class can be added (additional charge)

LEVEL SYSTEM

CAMBRIDGE LEVEL		SCALE
C2	Proficiency	200-230
C1	Advanced	180-200
B2	Upper-Intermediate	160-180
B1	Intermediate	140-160
A2	Pre-Intermediate	120-140
A1	Beginner	100-120
PRE A1	Starter	0-100

Textbooks

- Pearson Start-up
- Speakout
- Empower Speaking

Contents

- Reading, Writing, Listening, Speaking
- Special Class
 - Music, Pattern, Survival English
- Free Time
 - Golf, Yoga, Shopping mall(Free shuttle bus)

INCLUDED	Admission fee, Tuition, Hotel room, Meals, Hotel amenities, Laundry, Housekeeping
NOT INCLUDED	Airport pick-up/drop-off, Visa extension fees, SSP, SSP I-card, Airfare, Travel insurance, Outdoor activities, Hotel service&maintenance fees

TOEIC SPEAKING

1:1 CLASS
6 times (270mins)

1:4 CLASS
2 times (90mins)

TOEIC SPEAKING
Preparation

**SPEAKING
SPECIALIZED**

PREPARE TOEIC SPEAKING TEST

TOEIC Speaking course is designed to build a solid foundation and prepare you for the TOEIC speaking test.

1:1 classes are held for 45 minutes in each area (Reading/Listening/Writing/Speaking) to learn essential speaking skills, and TOEIC SPEAKING classes are held for an additional 90 minutes. This course is designed to help students improve their overall English skills as well as prepare for exams. In 1:4 group classes, discussions are held on a variety of topics under the systematic management of a dedicated teacher, providing an opportunity to maximize your English communication skills.



CURRICULUM

TOEIC SPEAKING	
06:30-10:00	BREAKFAST
08:40-09:25	1:1 TOEIC Speaking
09:30-10:15	1:1 TOEIC Speaking
10:25-11:10	1:4 Discussion
11:15-12:00	1:4 Discussion
11:30-13:00	LUNCH
13:00-13:45	1:1 Speakout A
13:50-14:35	1:1 Speakout A
14:45-15:30	Special Class
15:35-16:20	
16:30-17:15	1:1 Speakout B
17:20-18:05	1:1 Speakout B
18:00-19:00	DINNER



SPEAKING PLUS
TOEIC exam preparation

JOYFUL SKILLS
Group class

SMART 4 SKILLS
Writing, Reading, Speaking, Listening

LEARN & FUN
Music, Pattern English, Survival English

SMART 4 SKILLS
Writing, Reading, Speaking, Listening

★ 1:1 class can be added (additional charge)

LEVEL SYSTEM

CAMBRIDGE LEVEL		TOEIC SPEAKING
C2	Proficiency	-
C1	Advanced	LEVEL 8
B2	Upper-Intermediate	LEVEL 7
B1	Intermediate	LEVEL 6
A2	Pre-Intermediate	LEVEL 5
A1	Beginner	LEVEL 3-4
PRE A1	Starter	-

Textbooks

- Pearson Start-up
- Speakout
- TOEIC Speaking

Contents

- Reading, Writing, Listening, Speaking
- Special Class
 - Music, Pattern, Survival English
- Free Time
 - Golf, Yoga, Shopping mall(Free shuttle bus)

INCLUDED	Admission fee, Tuition, Hotel room, Meals, Hotel amenities, Laundry, Housekeeping
NOT INCLUDED	Airport pick-up/drop-off, Visa extension fees, SSP, SSP I-card, Airfare, Travel insurance, Outdoor activities, Hotel service&maintenance fees

IELTS SPEAKING

1:1 CLASS
6 times (270mins)

1:4 CLASS
2 times (90mins)

IELTS SPEAKING
Preparation

Weekly
MOCK EXAM

MAXIMIZE YOUR ENGLISH COMMUNICATION SKILLS

This is for students who want to learn IELTS speaking while studying basic English by combining IELTS Speaking, or for students preparing for the IELTS test who have particular difficulties with speaking skills. This course includes 45 minutes of 1:1 classes in each area to learn essential speaking skills and an additional 90 minutes of IELTS SPEAKING classes to improve your overall English skills and prepare for the exam. In 1:4 group classes, discussions are held on a variety of topics under the systematic management of a dedicated teacher, providing an opportunity to maximize your English communication skills.



CURRICULUM

IELTS SPEAKING	
06:30-10:00	BREAKFAST
08:40-09:25	1:1 Speakout A
09:30-10:15	1:1 Speakout A
10:25-11:10	1:4 Discussion
11:15-12:00	1:4 Discussion
11:30-13:00	LUNCH
13:00-13:45	1:1 IELTS Speaking
13:50-14:35	1:1 IELTS Speaking
14:45-15:30	Special Class
15:35-16:20	
16:30-17:15	1:1 Speakout B
17:20-18:05	1:1 Speakout B
18:00-19:00	DINNER



SMART 4 SKILLS
Writing, Reading, Speaking, Listening

JOYFUL SKILLS
Group class

SPEAKING PLUS
IELTS exam preparation

LEARN & FUN
Music, Pattern English, Survival English

SMART 4 SKILLS
Writing, Reading, Speaking, Listening

★ 1:1 class can be added (additional charge)

LEVEL SYSTEM

CAMBRIDGE LEVEL		IELTS
C2	Proficiency	8.0-9.0
C1	Advanced	7.0-7.5
B2	Upper-Intermediate	6.0-6.5
B1	Intermediate	4.0-5.5
A2	Pre-Intermediate	0-3.5
A1	Beginner	-
PRE A1	Starter	-

Textbooks

- Pearson Start-up
- Speakout
- IELTS Speaking

Contents

- Reading, Writing, Listening, Speaking
- Special Class
 - Music, Pattern, Survival English

INCLUDED	Admission fee, Tuition, Hotel room, Meals, Hotel amenities, Laundry, Housekeeping
NOT INCLUDED	Airport pick-up/drop-off, Visa extension fees, SSP, SSP I-card, Airfare, Travel insurance, Outdoor activities, Hotel service&maintenance fees

TARGET IELTS

1:1 CLASS
6 times (270mins)

1:4 CLASS
2 times (90mins)

SYSTEMATIC TEST
preparation course

Weekly
MOCK EXAM

EXPECT MAXIMUM RESULTS

Joyful Education's IELTS course offers one-on-one classes to systematically prepare for the test and improve test takers' weaknesses as quickly as possible. By taking advantage of 1:1 classes, you can deal with many questionnaires and exchange feedback on them with your teacher. 1:1 classes focus on Reading/Writing/Speaking skills that require intensive care.

In the 1:4 class, you will learn the subject of Listening.



CURRICULUM

TARGET IELTS	
06:30-10:00	BREAKFAST
08:40-09:25	1:1 IELTS Reading
09:30-10:15	1:1 IELTS Reading
10:25-11:10	1:4 IELTS Listening
11:15-12:00	1:4 IELTS Listening
11:30-13:00	LUNCH
13:00-13:45	1:1 IELTS Speaking
13:50-14:35	1:1 IELTS Speaking
14:45-15:30	Special Class
15:35-16:20	
16:30-17:15	1:1 IELTS Writing
17:20-18:05	1:1 IELTS Writing
18:00-19:00	DINNER



- IELTS READING PLUS**
IELTS Exam Preparation
- IELTS LISTENING PLUS**
IELTS Exam Preparation
- IELTS SPEAKING PLUS**
IELTS Exam Preparation
- LEARN & FUN**
Music, Pattern English, Survival English
- IELTS WRITING PLUS**
IELTS Exam Preparation

★ 1:1 class can be added (additional charge)

LEVEL SYSTEM

CAMBRIDGE LEVEL		IELTS
C2	Proficiency	8.0-9.0
C1	Advanced	7.0-7.5
B2	Upper-Intermediate	6.0-6.5
B1	Intermediate	4.0-5.5
A2	Pre-Intermediate	0-3.5
A1	Beginner	-
PRE A1	Starter	-

Textbooks

- IELTS textbooks for each subject

Contents

- Reading, Writing, Listening, Speaking
- Special Class
 - Music, Pattern, Survival English

INCLUDED	Admission fee, Tuition, Hotel room, Meals, Hotel amenities, Laundry, Housekeeping
NOT INCLUDED	Airport pick-up/drop-off, Visa extension fees, SSP, SSP I-card, Airfare, Travel insurance, Outdoor activities, Hotel service&maintenance fees

FAMILY PROGRAM

JUNIOR 1:1
6 times (270mins)

PARENTS 1:1
2 times (90mins)

PARENTS 1:4
2 times (90mins)

Training
FOR EACH SKILL

HARMONY OF ENGLISH STUDY AND ACTIVITIES

As a specialized family training center, we offer a Cambridge program for children and selected textbooks to help parents improve their conversation skills. This program consists of only 1:1 classes and is tailored to the individual student. It is prepared to thoroughly study and learn the textbook, and 1:1 classes for parents are also designed to improve speaking skills with the highest efficiency in a short period of time.

Parents who do not wish to take classes can transfer 1:1 classes to their children and provide guidance on leisure activities such as going to the shopping mall, yoga, or golf classes.



CURRICULUM

FAMILY PROGRAM	
06:30-10:00	BREAKFAST
08:40-09:25	1:1 Cambridge Prepare A
09:30-10:15	1:1 Cambridge Prepare A
10:25-11:10	1:1 Cambridge Prepare B
11:15-12:00	1:1 Cambridge Prepare B
11:30-13:00	LUNCH
13:00-13:45	Daily Activity
13:50-14:35	
14:45-15:30	Free Time
15:35-16:20	
16:30-17:15	1:1 Cambridge Prepare C
17:20-18:05	1:1 Cambridge Prepare C
18:00-19:00	DINNER
19:00-19:45	Joyful Evening Club
19:50-20:35	

JUNIOR

SMART 4 SKILLS

Writing, Reading, Speaking, Listening

SMART 4 SKILLS

Writing, Reading, Speaking, Listening

LEARN & FUN

Swimming, Storytelling, Music, Art, Movie

SMART 4 SKILLS

Writing, Reading, Speaking, Listening

★ 1:1 class can be added (additional charge)

ADDITIONAL JOY

English Diary, Writing by Topic

LEVEL SYSTEM

CAMBRIDGE LEVEL		SCALE
C2	Proficiency	-
C1	Advanced	-
B2	Upper-Intermediate	First for Schools
B1	Intermediate	Preliminary for Schools
A2	Pre-Intermediate	Flyers/Key for Schools
A1	Beginner	Mover
PRE A1	Starter	Starter

Textbooks

- Cambridge YLE
- Cambridge Prepare

Contents

- Reading, Writing, Listening, Speaking
- Daily Activity
- Swimming, Storytelling, Music, Art, Movie



CURRICULUM

FAMILY PROGRAM	
06:30-10:00	BREAKFAST
08:40-09:25	1:1 Start-Up
09:30-10:15	1:1 Start-Up
10:25-11:10	Free Time
11:15-12:00	
11:30-13:00	LUNCH
13:00-13:45	1:4 Discussion
13:50-14:35	1:4 Discussion
14:45-15:30	Free Time
15:35-16:20	
16:30-17:15	
17:20-18:05	
18:00-19:00	DINNER

PARENTS

SMART 4 SKILLS

Writing, Reading, Speaking, Listening

ENJOY & RELAX

Golf, Yoga, Massage

★ Golf/Yoga - Local registration and Payment

TOPIC TALK

Group Discussion

ENJOY & RELAX

Golf, Yoga, Massage, Shopping Malls, Swimming

★ 1:1 class can be added (additional charge)

LEVEL SYSTEM

CAMBRIDGE LEVEL		SCALE
C2	Proficiency	200-230
C1	Advanced	180-200
B2	Upper-Intermediate	160-180
B1	Intermediate	140-160
A2	Pre-Intermediate	120-140
A1	Beginner	100-120
PRE A1	Starter	0-100

Textbooks

- Pearson Start-up
- Speakout

Contents

- Reading, Writing, Listening, Speaking
- Special Class
 - Music, Pattern, Survival English
- Free Time
 - Golf, Yoga, Shopping mall (Free shuttle bus)

	OFF SEASON (Mar-Jun/Sep-Dec)	PEAK SEASON (Jan-Feb/Jul-Aug)
INCLUDED	Admission fee, Tuition, Hotel room, Meals, Hotel amenity, Laundry, Housekeeping	Admission fee, Tuition, Hotel room, Meals, Hotel amenity, Hotel Service&matenance fees, Airport pick-up/drop-off, Housekeeping, Laundry, SSP, SSP-I CARD, Visa extension fees(within the training period),
NOT INCLUDED	Hotel Service&matenance fees, Airport pick-up/drop-off, SSP, SSP I-card, Airfare, Travel insurance, Outdoor activities Visa extension fees(within the training period)	Airfare, Travel insurance, Outdoor activities

ACTIVITY SCHEDULE

MON, WED, FRI

GOLF LESSON

- 1 hour class 3 times a week (3 hours in total)
- 1 golf instructor for every 3 students
- Included : equipment(sharing), transportation
 - Not Included : Personal items (golf shoes, gloves, clothing, etc.)

FRI

SPECIAL EVENT DAY

(Family Program Exclusive Activities)

- QuizBEE
- National flag day
- Superhero day
- Career day

SUN

MARINE SPORTS

- Trial scuba diving, Jet ski, Banana boat, etc.

TUE, THU

OUTDOOR FIELD TRIP

(Family Program Exclusive Activities)

- Philippines History 1
 - Church of Santo Nino
 - Casagordo Museum
 - Magellan's Cross
- Philippines History 2
 - Fort San Pedro
 - Philippines National Museum
- Ocean Park Aquarium

SAT

ISLAND HOPPING

- Week 1, Week 3
 - Island Hopping, Luxury Cruise Hopping
- Week 2, Week 4
 - Oslob Whale Shark Tour

RESORT DAY TOUR

- Plantation Resort & Spa

※ Schedule and cost may change depending on local circumstances. (Local registration and Payment)

JOYFUL ACTIVITY

Joyful Premium English Center offers a variety of support for students to enjoy. The program is applicable to both adults and children, subject to change depending on specific circumstances, and vehicles are provided free of charge to all users for the safety and security of students who may be canceled.


• Enjoy & Relax

	Golf Lesson	Round of golf	Yoga
Content	Opportunity to learn English and golf lessons together and enjoy! Beginner lessons make it easy for newcomers to start without pressure.	Enjoying a special golf game on the open course while breathing in clean air and admiring the clear sky.	Daily activity that focuses the body and mind to relieve stress and provides both aerobic and strength exercises for effective weight loss.
Participants	Team composition(1 pro coach + 3 students)		Maximum 15 participants per class
Schedule	3sessions/week, 1hour each(total of 3 hours)		5 sessions per week, 1 hour each
Inclusions	Equipment(sharing), transportation		Yoga mats, transportation provided
Preparations	Personal items (gloves, clothing, golf shoes)		Personal items (yoga attire,towels)
Remarks	 ※ Lessons conducted by a pro golfer  ※ Use of outdoor golf practice range		※ Direct registration and payment at the golf club affiliated with the hotel

• Water sports

	Island Hopping	Luxury Cruize Hopping
Content	Experience a delightful time on board using Joyful's exclusive boat and directly explore the clean and clear tropical sea!	Luxurious cruise with jacuzzi and sunbeds! 1 friendly yacht boy per 2-3 people Free DSLR photography and GoPro underwater photography!
Participants	Approximately 25 participants	20 to 30 participants
Schedule	13:00~17:00	09:30~14:30
Inclusions	Snacks, fruits, beverages, beer, towels, snorkeling equipment	Cruise boarding fee, national marine park entrance fee, snorkel equipment rental, towels, lunch on board, and unlimited fruit/ drinks (soda, beer, wine, cocktails, rum, champagne, etc.)
Preparations	Personal items (Tubes, goggles, sunscreen, etc.)	
Remarks	※ Wearing aqua shoes recommended ※ Wear swim wear before departure, shower after returning to the hotel	※ Prepare personal items such as sunscreen ※ Subject to cancellation in case of inclement weather
	Marine Sports	Oslob day tour
내용	A set of three marine sports activities representing the details of the area - exciting activities in the beautiful sea!	Get a once-in-a-lifetime opportunity for a life shot with the majestic whale shark!
인원	5 to 12 participants	5 to 10 participants
시간	13:00~16:00	04:00~17:00
포함 사항	Banana boat, snorkeling, jet skiing	Breakfast, Lunch, Beverages, Tour costs, Entrance fees
준비 물품	Personal item (Tubes, goggles, sunscreen, etc.)	Swim wear, Snorkeling gear for children required
확인 사항	※ Participation available from age 10 ※ Wear swim wear before departure, shower after returning to the hotel	※ Subject to cancellation depending on the situation on the day ※ Conducted by an external travel agency

• Resort day tour

Plantation Bay Resort					
Content	 Plantation Bay is a 5-star resort popular for its various types of spacious swimming pools, beachfront, gardens, shooting range, paddleboarding, kayaking, and stunning scenery. Conveniently located approximately 7 minutes by car from Joyful Education Center.				
Participants	20 to 40 participants	Schedule	09:00~17:00	Preparations	Personal items (Tubes, goggles, sunscreen, etc.)
Inclusions	Day trip voucher, towels, resort lunch, rock climbing, ping pong, 30-minute bicycle rental, 15-minute use of paddle boat/kayak				

• Kids program

	Philippines history	Ocean park	Swimming Class
Content	Sto. Nino, Casa Gorordo Museum, Magellan's Cross, San Pedro Fort, National Museum of the Philippines.	Visit to the only large-scale aquarium in Cebu and bird show.	From kicking to strokes, special coaching by a Korean swimming instructor.
Participants	5 to 30 participants	5 to 30 participants	5 to 15 participants
Schedule	13:00~16:00 (Instead of afternoon classes)	13:00~16:00 (Instead of afternoon classes)	3 times a week, 1 hour each (after dinner)
Inclusions	Beverages, Snacks, Entrance fees	Beverages, Snacks, Entrance fees, Doctor fish	towel, kickpad
Preparations	Group T-shirts (upon registration)	Group T-shirts (upon registration)	Personal items (goggles, Aquashoes)
Remarks	※ Subject to cancellation in case of inclement weather	※ Subject to cancellation depending on the aquarium's situation.	※ Subject to change/cancellation due to personal circumstances of the instructor.

※ Participation is limited to participants of the family program. Transportation will be provided for external activities.



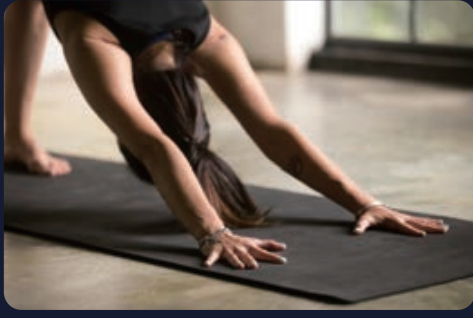
• Shuttle bus schedule

Joyful Premium English Center operates a shuttle bus service for the convenience of students.

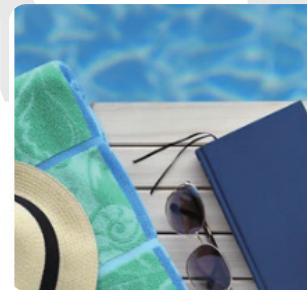
The schedule and cost may change or be canceled depending on local circumstances and cannot be used for students' personal schedules.

Off Season (Mar-Jun/Sep-Dec)			
Date	Hotel Departure	Location	Departure from Mall
Mon	15:30	Shang's Mall	17:00
Tue	15:30	SM Seaside Mall	17:30
Wed	15:30	Newtown LG Garden	17:00
Thu	15:30	Shang's Mall	17:30
Fri	15:30	Newtown LG Garden	17:00
Sat	13:00	SM Seaside Mall	17:00
Sun	12:00	SM Seaside Mall	17:00

Peak Season (Jul-Aug/Jan-Feb)			
Date	Hotel Departure	Location	Departure from Mall
Mon	08:40/15:30	Shang's Mall	10:00/17:00
Tue	09:40/15:00	SM Seaside Mall	11:30/17:30
Wed	08:40/15:00	Newtown LG Garden	09:50/17:00
Thu	09:40/15:00	SM Seaside Mall	11:30/17:30
Fri	08:40/05:30	Shang's Mall	10:00/17:00
Sat	12:00	SM Seaside Mall	15:30
Sun	10:00	SM Seaside Mall	14:30



CHECK LIST



1. PREPARATION

- Passport valid for at least 6 months
- Round-trip airline tickets
- E-Travel QR Code issuance (free)
- Can be completed 72 hours before departure (etravel.gov.ph)
- English family relationship certificate (issued to show all family members' names), recommended international traveler's insurance certificate
- Cash (USD) and a credit card for emergency use
- Photos for Visa (2x2 inches)
- Notebook and stationery
- Clothing (avoid bringing luxury items) and toiletries
- Other necessities - swimwear, sunglasses, first aid kit, aquashoes, etc.

2. CHECK-IN AND OUT POLICY

Following the Monday to Friday class schedule. However, if student has to check in on Friday due to personal flight schedules, student can use the additional accommodation service.

Check-In	Check-Out
SUN	SAT (11AM)
SAT	FRI (9pm)
FRI	THU (9pm)

※ Late check-out: 1,000pesos per room, lunch/dinner provided, advance reservation required. (Room change may be required and may not be provided depending on room availability)

※ During peak season, prior check-in with the manager in charge is required.

※ Possible to leave luggage at the hotel front desk after checking out.

※ Applies to those who enroll on December 30, 2024.

3. Additional stay services

When camp student's family visiting or when additional stay is required due to flight schedule after the camp period.

Meals, laundry service are provided, and can be used hotel and Joyful center's facilities.

Accommodate up to 3people/Deluxe room, and 6people/Family room and VIP room by the hotel regulations.

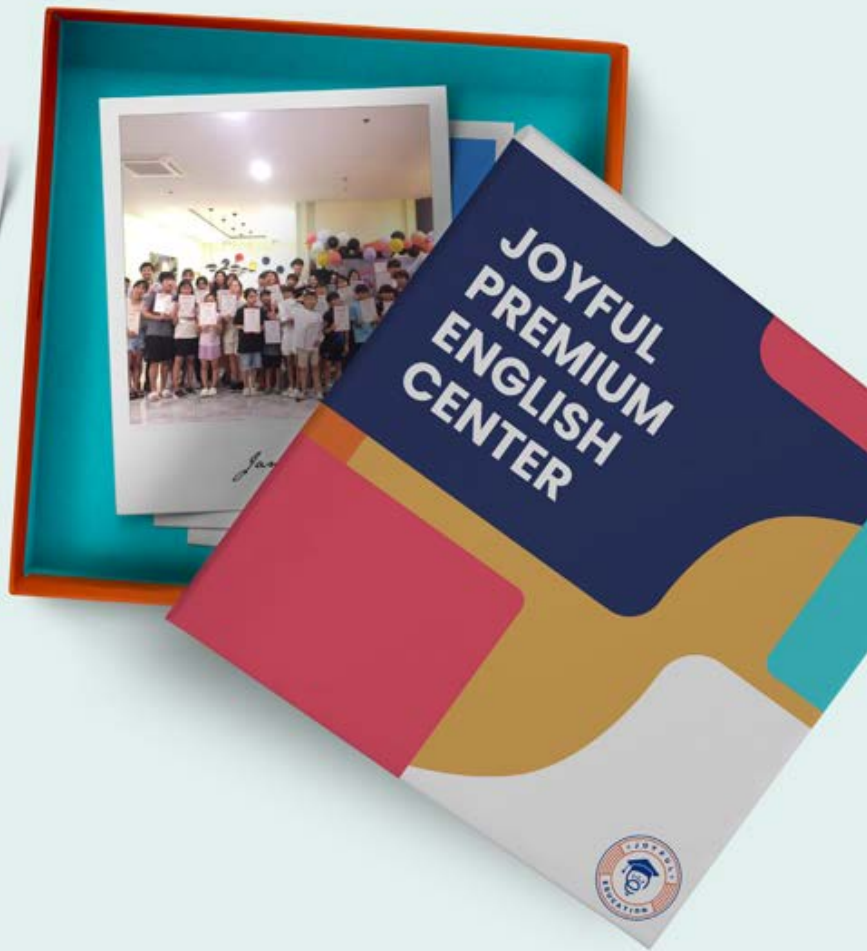
Add a bed	
Extra bed	2,000p
Add a room	
1~2persons/Deluxe	4,000p
3persons/Deluxe	6,000p
4p/Deluxe, Family, Vip	8,000p

※ Additional stay policy

- Available if there is vacancy at the time of application.
- Family of students enrolled for 3 to 8 weeks: Up to 2 weeks (13 nights and 14 days)
- Family of students enrolled for 2 weeks or less: Up to 1 week (6 nights and 7 days)
- Airport pick-up/send: 1,000pesos per team (one way)

※ During peak season, prior check-in with the manager in charge is required.

※ This amount applies to those who enroll on March 2025.





PREMIUM ENGLISH CENTER

JOYFUL EDU



+82-70-4922-8400



joyfultshine@gmail.com



T-Shine Hotel, Sitio Tribu, Mactan Island, Lapu-Lapu City, 6015 Cebu, Philippines



フィリピン留学なら セブ島留学センター

失敗しないフィリピン留学を
業界最安値でご提案

TEL : 0120-178-600 (10時~19時)

LINE相談 : @cebu

Google検索 : 「セブ島留学センター」