



HELP EDUCATION GROUP
HELP ENGLISH Language Program, Inc.

Be HELP



www.helpenglish.org

THE PHILIPPINES

The Philippines Islands became a Spanish colony during the 16th century. They were ceded to the United States in 1898 following the Spanish-American War. In 1935 the Philippines became a self-governing commonwealth. In 1942, the islands fell under Japanese occupation during World War II and U.S. Forces and Filipinos fought together during 1944 - 45 to regain control. On 4th of July in 1946, the Republic of the Philippines attained its independence from the United States.

For this reason, Philippine culture is combination of Eastern and Western cultures and also displays significant amount of Spanish and American influences. Filipino and English are the official languages; Filipino is a standardized version of Tagalog which is spoken mainly in Metro Manila and other urban regions. Both Filipino and English are used in government, education, print broadcast media and business.

» Baguio



Climate

The average temperature is from 15-26°C and it can drop down to 8°C from December to early February.



Location

240km north of Manila



Language / Dialect

- Ilocano - 55%
- Tagalog - 25%
- Other dialects-20%
- English widely used

» Clark



Climate

The average temperature is from 25-32°C, most of the time, the weather is clean, dry and a little bit hot.



Location

95km north of Manila



Language / Dialect

- Kapampangan-70%
- Tagalog - 25%
- Other dialects-5%
- English widely used

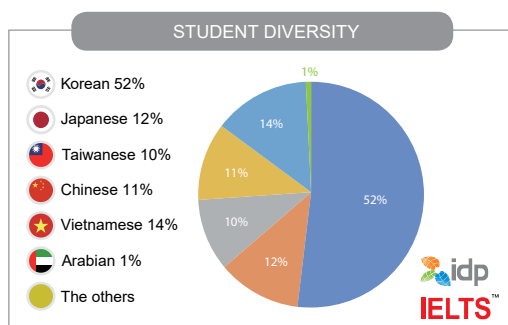
HELP is more than just a school where students learn English, as it is also a place that enhances the quality of their lives through a better education and inspiring experience. HELP connects passionate and innovative people to the global society by pursuing and sharing the knowledge and communication skills that are valued by the international community in the 21st century. As the school's founder and CEO, I am committed to offer more effective exclusive and excellent HELP.

Choose HELP The Best English Language School

STUDENT DIVERSITY

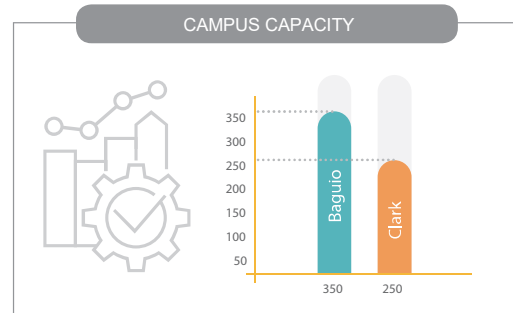
HELP Institute has foreign population made up of students from Korea, Japan, Vietnam, China, Taiwan, Saudi Arabia, and Thailand.

Diversity has a positive impact on all students. In fact, when HELP students identify the campus as a nondiscriminatory environment, underrepresented students feel a greater sense of belonging. The opportunity to interact with diverse peers, both in and out of the classroom, leads to greater active thinking, intellectual engagement and motivation to our learners. In addition, students who have the opportunity to confront multicultural issues in the classroom and in extracurricular settings report heightened satisfaction with their overall experience upon completing their program.



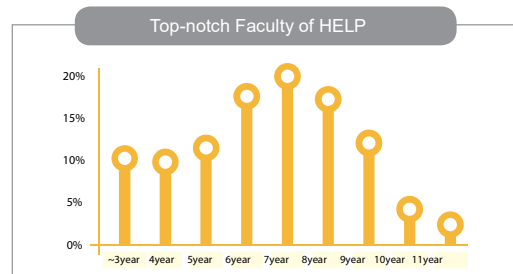
2 CAMPUSES

Our students have an option to choose as we offer diversified programs in 2 different campus settings. HELP Institute has maximum capacity of 330 students in Baguio City (the education hub of the Philippines) and maximum capacity of 270 students in Clark Pampanga (the special economic zone of the Philippines).



OUTSTANDING FACULTY

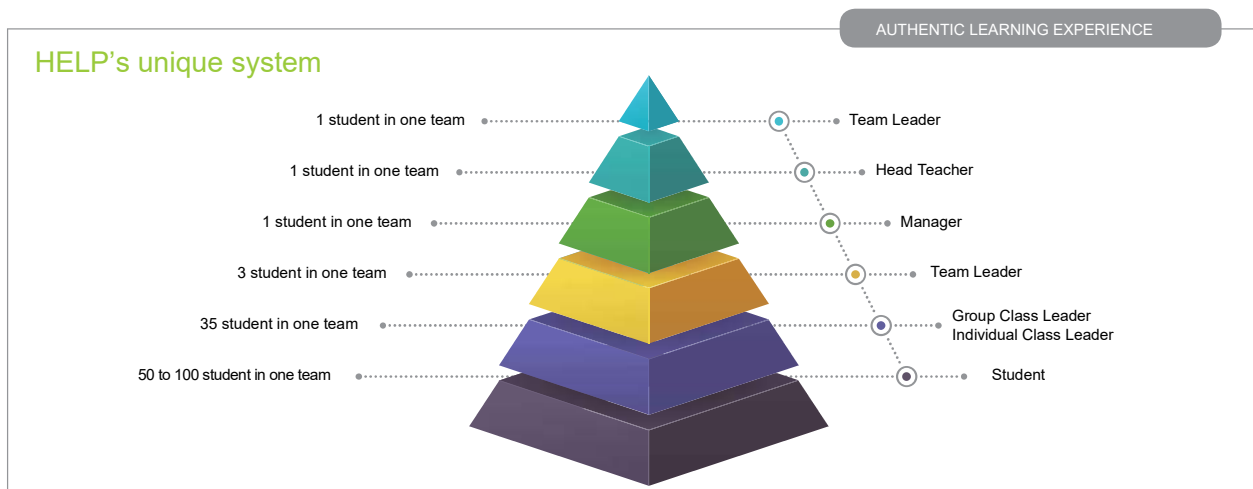
All HELP teachers are well qualified and experienced. In fact, the average teaching experience among the teachers is 7 years. We believe that the teachers' abilities and passion are often translated into students' satisfaction. Many of our teachers graduated from top universities in and out of the Philippines.



AUTHENTIC LEARNING EXPERIENCE

We use an instructional approach that allows students to explore, discuss, and meaningfully construct concepts and relationships in contexts that involve real-world problems and projects that are relevant to the learner. This is why most of our students become fluent quickly and absorb a plethora of vocabulary painlessly.

Our instructors encourage students to create a tangible, useful product to be shared with their classmates and communicate in English to create real-life learning. They help students develop real English skills through various activities based on realistic situations. By the end of the program, students can be expected to know how to interact with Americans naturally without any hesitations.



History of HELP

- 1996
 - Founding of the first SPARTA institute in the Philippines.
 - Opening of PNU office.
- 2001
 - Accreditation from TESDA (Technical Education and Skills Development Authority)
 - Officially offered beginner and intermediate levels in 2 branches
 - Certified by Philippine Department of Education (DEPED)
- 2002
 - HELP Junior Program launching.
 - Inception of TOEIC & TOEFL (special test courses).
- 2005
 - Opening of Seoul Office.
- 2006
 - Partnership with AILA (TESOL) in Australia.
 - Partnership with EIGO (Internet English) in Japan.
- 2007
 - Opening of Longlong campus.
 - IELTS (special test course) opened.
- 2008
 - Opening of HELP Institute Korea (Kyungseong and Pukyong National Front).
 - Opening of HELP TOEIC Academy in Busan.
 - Commencement of HELP TalkingOn Video English service.
- 2010
 - VIVA College MOU signed Australia.
 - Kick-start the Prestigious American University admission and introduced transfer Guarantee Program (UAP).
 - Selected as one of the BEST Schools in Cordillera, Philippines.
 - Published "HELP English Grammar".
 - G-TELP Philippine Commission International certified testing and accredited test center designation.
 - MOU signed with Singapore Auston College of UK Coventry Singapore Campus
 - Opening of Martin Advance Campus.
 - Introduced TESOL (specialist test course).
- 2011
 - Opening of HELP Clark campus accommodating 300 students.
 - ETS TOEIC S/W test center internationally recognized test specifies.
 - Officially affiliated with IDP IELTS Registered Agent.
 - Longlong and Martin campuses team up with King's College of the Philippines.
- 2012
 - Partnership of HELP Clark campus with Central Luzon College of Science and Technology.
 - TMC Academy MOU signed in Singapore.
 - Elementary and Intermediate Longlong campus expansion.
- 2013
 - Official Test venue for IDP IELTS.
 - Launched ITT (Interpretation & Translation Test) Course and Center.
 - Opened observation class in BESETO International School in the Philippines for 12 weeks. Official bridge from the Philippines government with Concordia International University in USA.
- 2014
 - ETS TOEIC LC/RC test international authorized testing center designation.
 - Canada Concordia International College signed MOU.
 - ETS TOEFL test international authorized testing center designation.
- 2015
 - Established a new accommodation for Junior student in Longlong campus.
 - Launched International Senior Highschool in Longlong, approved by Philippine Government. Opened English education center in Vietnam.
- 2016
 - Re-designed Top-Up program and signed with UK, Switzerland and USA Universities.
 - MOU with IVOLINE for on-line education.
- 2017
 - MOU with Gentry International School for junior education.
- 2018
 - Launching Thailand Junior Program for Summer and Winter Camps in HELP Clark campus.



CLARK CITY

Clark is setting out to become the hub for business, aviation, education, industry and tourism in the Philippines as well as a leisure, entertainment, and gaming center of Central Luzon.

Furthermore, it is recognized as a first class, highly-urbanized international city with Filipino and foreign residents from around the world. Clark is considered one of the most progressive areas in the country. It is the gateway to the Philippines from various Asian countries with continuous development of international transport routes. With its own international airport, a well-designed urban planning, and located just a couple of hours away from Manila, it's a prime choice for tourists, businesses investors, and foreign students.

Six Reasons

Why you have to choose Clark City?

- ① Modern infrastructure facilities and service
- ② Hub of aviation, education, and tourism
- ③ International Airport inside Clark
- ④ Highly-urbanized international city
- ⑤ Zero-percent crime rate
- ⑥ Attractive entertainment place and spot





CLARK CAMPUS

HELP Clark is the home of quality education where students are trained to become effective international communicators and become top leaders in the future. It helps individuals to be and courageous enough to face challenges head on by speaking their hearts and minds out to whichever nationality they meet on their way to success.

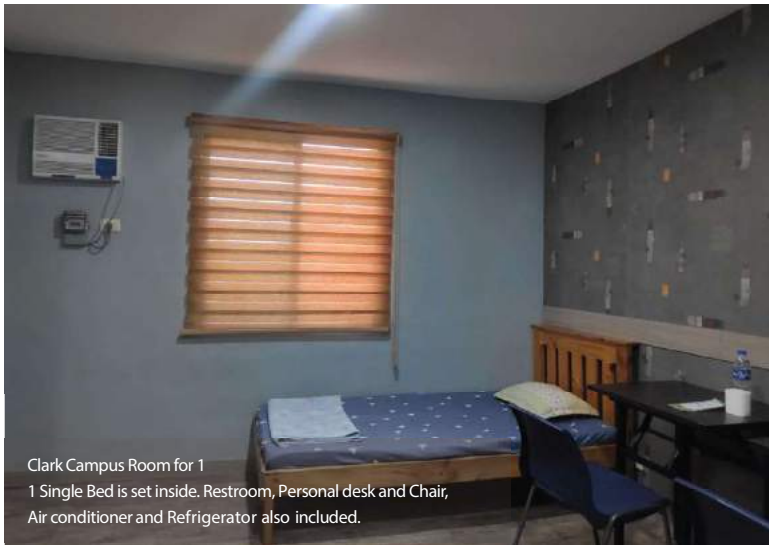
HELP Clark is strategically situated in a former US Military Base with American-like surroundings and ambience. Five minutes away from the International Airport and 1.5 to 4 hours away from other major Asian destinations. Clark also boasts a wide array of leisure and business activities which makes it a perfect approach to delivering the top caliber education that we promote with our students.

The schedule is for Monday to Friday, there is no class at the weekend. The schedule can be adjusted

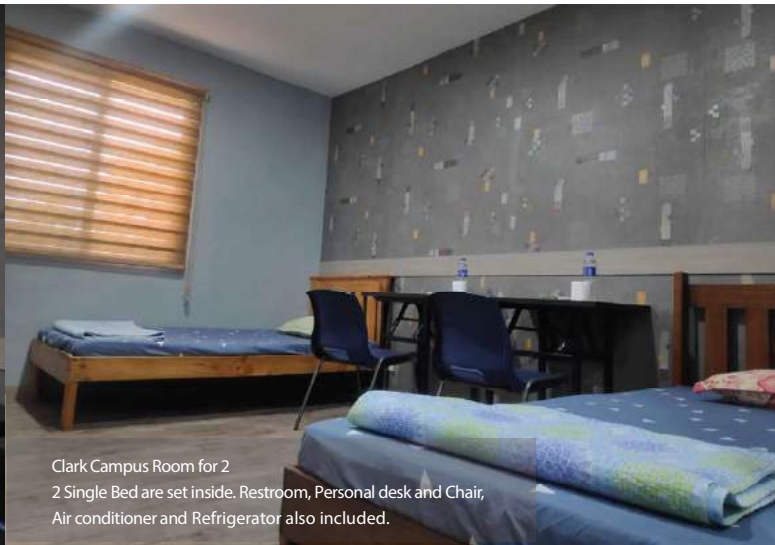
Time	Activities
06:40 - 07:20	Meal at Dining Hall
07:30 - 08:10	Morning Reading Class
08:20 - 09:00	Individual Class
09:10 - 09:50	Group Class
10:00 - 10:40	Individual Class
10:50 - 11:30	Self-Study
11:30 - 12:00	Meal at Dining Hall
12:15 - 12:55	Self-Study
13:05 - 13:45	Individual Class
13:55 - 14:35	Self-Study
14:45 - 15:25	Individual Class
15:35 - 16:05	Self-Study
16:15 - 17:05	Self-Study
17:15 - 17:55	Special Class A
17:30 - 18:30	Meal at Dining Hall
18:20 - 19:05	Special Class B
20:00 - 20:30	Vocabulary Test
20:30 - 00:00	Self-Study

ACCOMMODATION of HELP

Clark Campus



Clark Campus Room for 1
1 Single Bed is set inside. Restroom, Personal desk and Chair,
Air conditioner and Refrigerator also included.



Clark Campus Room for 2
2 Single Bed are set inside. Restroom, Personal desk and Chair,
Air conditioner and Refrigerator also included.



Clark Campus Room for 4
4 single beds are set inside. Restroom, Personal desk and Chair, Air conditioner and
Refrigerator also included.



Clark Campus Room for 3
1 Double Deck and 1 Single Bed are set inside. Restroom, Personal desk and Chair,
Air conditioner and Refrigerator also included.



Students can immediately settle in soon as they arrive in the academy, as the
dormitories are conveniently located in the same building as the school.



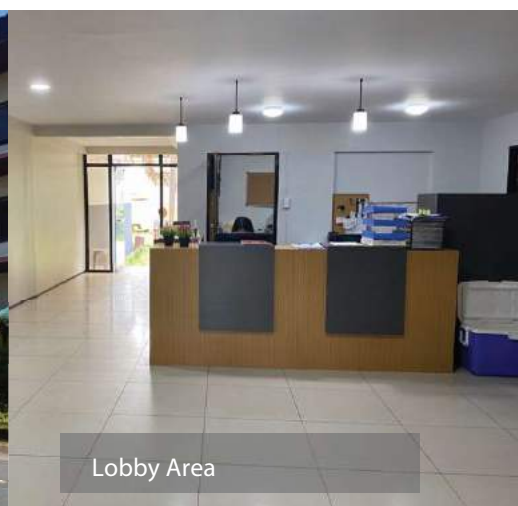
Restroom
Water Heater, Toilet Bowl, Sink for washing face and hands.



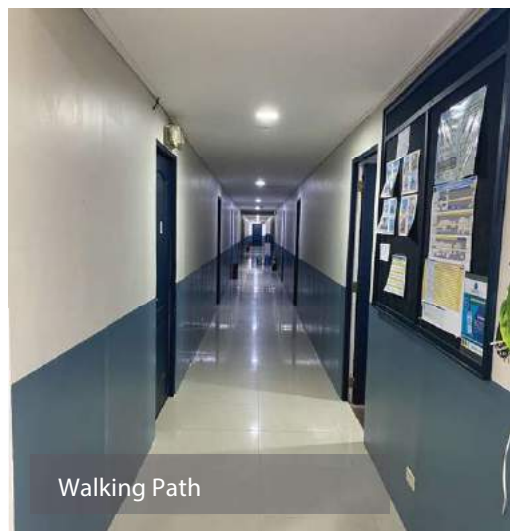
Main Entrance



Front Building



Lobby Area



Walking Path



Multi Purpose Hall



Convenience Store



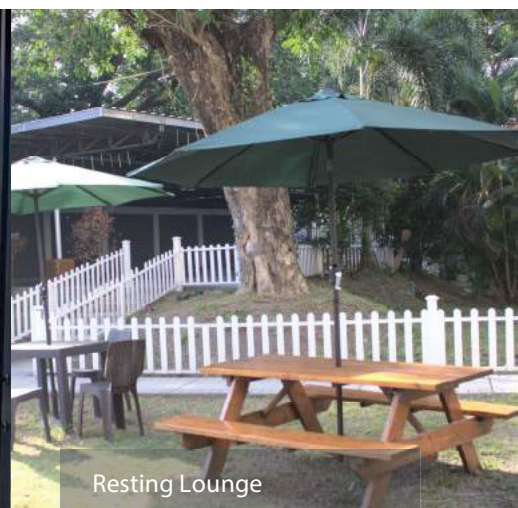
Swimming Pool



Open Court



Dining Hall



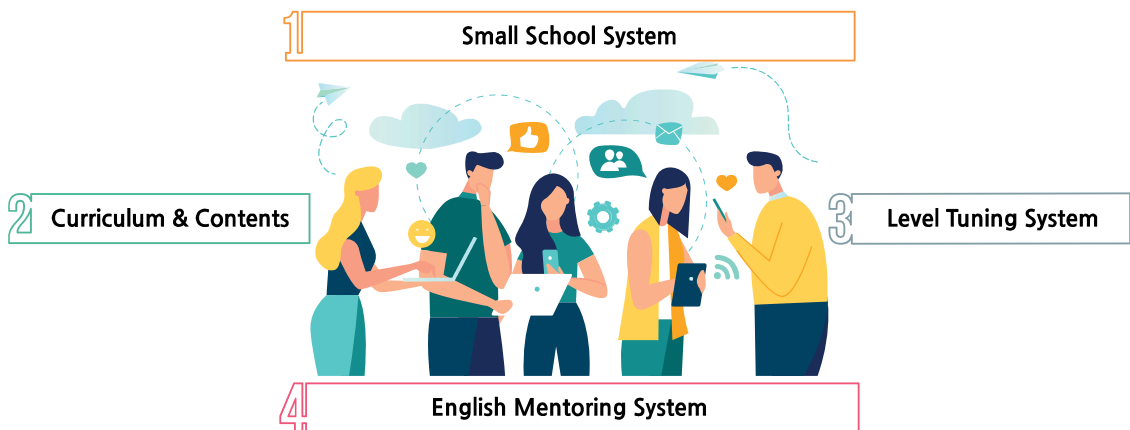
Resting Lounge

HELP Education System

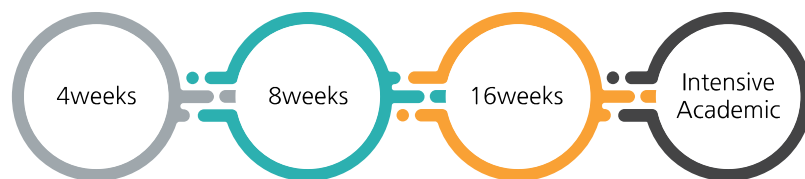
HELP English Language Program, adapted the Sparta System when it first started its operation in 1996.

Adopted Sparta System in 1996

- Small school system : Under 1 Team - 1 teacher intensively manages small group
- Mentoring system : 1 teacher counsels several students as a mentor



Spartan system under Edu biz teams



Small School System

- Placement Test upon enrollment - Level1~9
- Tuning levels based on student performance



Curriculum & Contents

- 4+2 English sections with 9 levels
- 150 textbooks
- Beginner and Advanced course for TOEIC, TOEFL, IELTS



Level Tuning System

- SSS: operate a small class under a team
- One on one intensive class
- Personal School Report with 1:1 counseling on English Skills



English Mentoring System

- Mentoring: 6 students will have counseling with Nanny Teacher
- Counseling: have counseling with Native speaker
- English and Pattern Checker





ESL

English as a **Second Language**



Offered in
Baguio and Clark Campus

Good for
Beginner to Advanced Level students

Program Information

English as a Second Language is the use of English by speakers with different native languages.

Language education for people learning English may be known as English as a Second Language (ESL), English as a Foreign Language (EFL), English as an Additional Language (EAL).

All students (from level 1 to 9) can join HELP's ESL program. Also, HELP English School offers Speaking Intensive program to students who want to develop their speaking skills more than the other 3 main skills in English. Every day, students have 4 - 5 individual classes focusing on Macro Skills (Reading, Listening, Writing and Speaking) while a group class give students a chance to practice their public speaking skills. In addition, HELP's intensive reading class promotes students' reading - writing skills and Special classes that are supplemental to develop other related skills of students.

This ESL Program is an intensive immersion program that is perfect for active learners who want to participate more in classes exploring wide range of topics and real-life situations to prepare students for complex international experiences



Module Outline

Course	ESL	Speaking Intensive
Features	Four basic modules based on TESOL	Four basic modules based on TESOL + Intensive Speaking
Subject	1:1 Reading Plus Speaking 1:1 Listening Plus Speaking 1:1 Writing Plus Speaking 1:1 Speaking 1:5 Group Class (Presentation + Grammar)	
1:1 Class	Total 4 times (40 minutes each)	Total 5 times (40 minutes each)
1:5 Class	Total 1 time (40 minutes each)	
Mandatory	Intensive Reading Program Special Class	Vocabulary and Pattern Study and Test
Optional	Self - Study	

Program Features

» ESL

This program provides the following: conversational English, grammar, reading, listening comprehension, writing, and vocabulary. Through our ESL course, students can practice conversational English and learn the skills necessary for communicating in many different situations.

» Speaking Intensive

Most classes in this course are individualized (with one student and one teacher), so that students receive individual attention from their teachers and they have plenty of chances to converse with teachers which accelerates learning speed.





IELTS

International English Language Testing System



Offered in
Baguio and Clark Campus

Good for
Beginner to Advanced Level students

Program Information

IELTS is an internationally recognized English proficiency test developed by University of Cambridge ESOL Examinations, the British Council and IDP (IELTS Australia).

For those who consider working or studying abroad, the IELTS test is one of the most challenging and valuable feats. At HELP, student can practice and take the test in the same place to boost score as our campus is an official Venue for the IDP IELTS test.

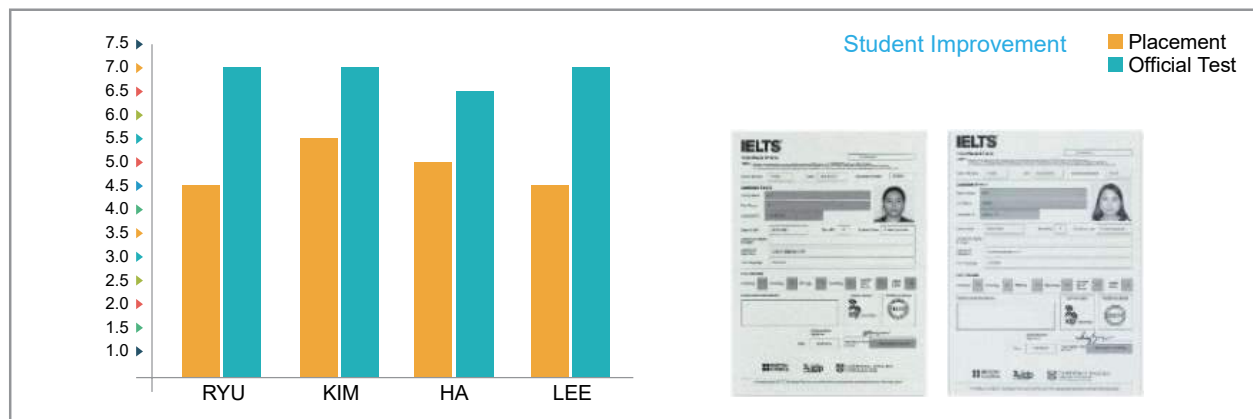
The majority of HELP teachers have undergone intensive training in IELTS and scored above 8.0 on the test. Moreover, results have shown that HELP students get an average score of 6.5 to 7.0 in the duration of 3 months due to the fact that they take mock test on a weekly basis and study with our IELTS expert teachers.

Program Features

- Students take mock test for all macro-skills (Speaking, Listening, Reading, and Writing) every Friday
- In the course, students will practice the different types of questions and will get used to them. This will save them a lot of time.

Module Outline

	Regular		Score Guarantee			
Course	Beginner	Advance	5.5	6.0	6.5	7.0
Campus	Baguio & Clark		Baguio			
Requirement	Entrance Exam by Test Course Coordinator		IELTS 4.0	IELTS 5.0	IELTS 6.0	IELTS 6.5
			· Official IELTS Score · Mock Test + Interview		Only Official IELTS Score	
Duration	Over 4 weeks		8 weeks / 12 weeks Program			
Subject	1:1 IELTS Reading / 1:1 IELTS Listening 1:1 IELTS Speaking / 1:1 IELTS Writing 1:5 IELTS Group Class (Reading and Listening)		1:1 IELTS Speaking 2 times 1:1 IELTS Writing 2 times 1:5 IELTS group class (Reading and Listening)			
What student must do?	IELTS mock test twice a month Mandatory IELTS vocabulary test		· Student should not absent class more than 2 times. · Student should not receive any penalty especially ground from school (If student violate school's rule and got ground, student will be disqualified from Score Guarantee course. And there has no refund from school and agencies.) · IELTS mock test every week / Mandatory IELTS vocabulary test			
Guaranteed Benefit	None		· If student didn't achieve guaranteed score before end of program, student will have free class from HELP. · If student fail to achieve guaranteed score before end of program, school will give free IELTS official test once. (However, accommodation and visa extension are not included.)			

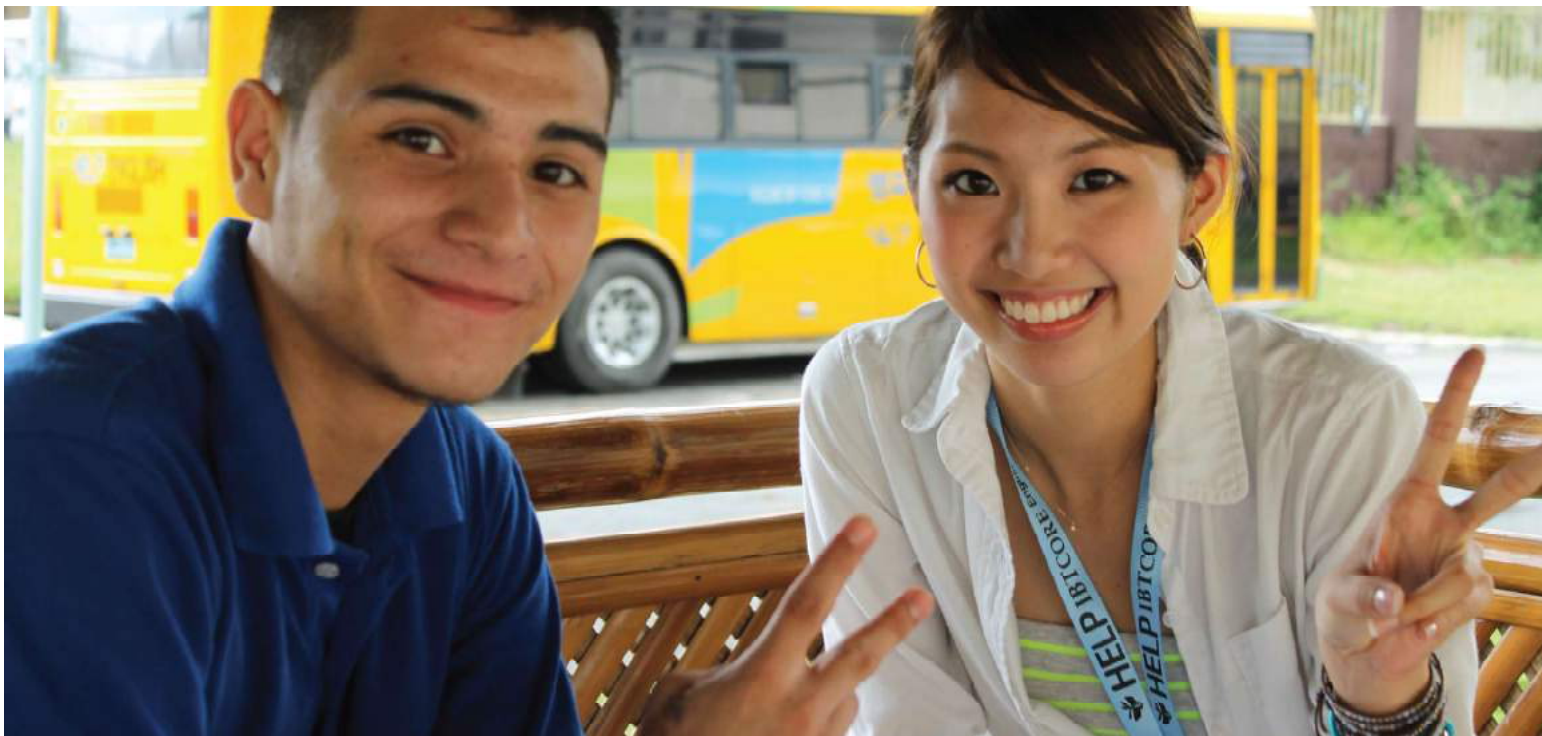


Student's Program Reviews

The English language is recognized by most developed countries. As such, we strongly desire to master this language to work or study in many other countries. However, as for me, getting a 'pass' for English in my school was still so challenging, and it was so difficult for me to see clear improvement in English. I think the hardest part was the fact that I could not really see my English progressing. Despite this, after coming to HELP academy, and having sufficient practice by taking mock tests regularly, I felt that my English skills developed.

I effectively studied English, with strong determination of getting high score in IELTS. Now, I managed to get 7.0 in IELTS in a recent official test.





TOEFL

Test of English as a Foreign Language



Offered in
Baguio and Clark Campus

Good for
Beginner to Advanced Level students

Program Information

TOEFL developed by America ETS (Educational Testing Service) measures English abilities at the University level for non-native people who plan to enter University or Graduate School in America, Canada, Australia, England and etc.

HELP's TOEFL program is designed to equip the student with test taking strategies and techniques to achieve the students' target score while enhancing their English proficiency holistically through a specialized curriculum.

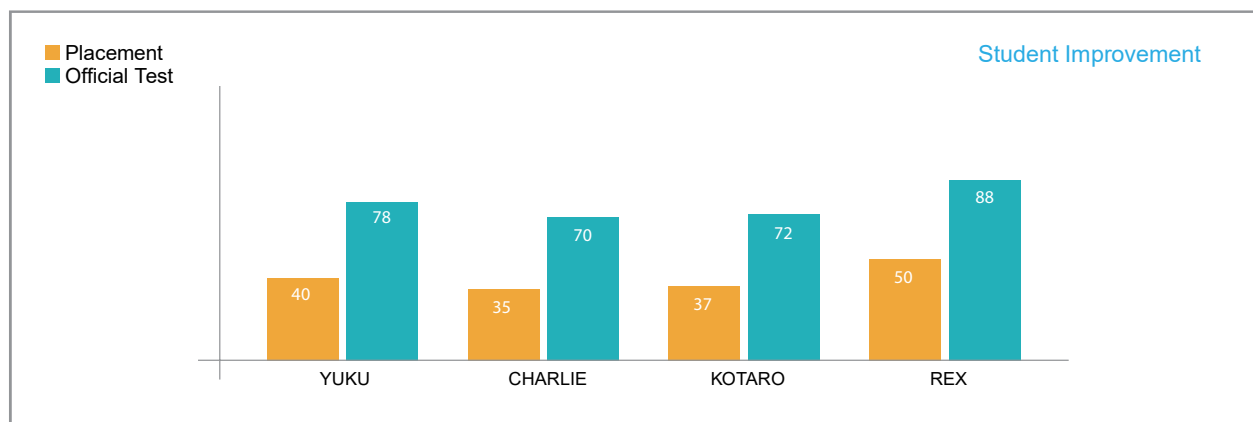
The TOEFL test is essential for students who want to apply to Universities in U.S.A. as over 90% of American Universities accept international students based on their TOEFL scores. Developed by a TOEFL perfect score instructor, HELP's TOEFL Preparatory program will fasten students' academic

Program Features

- Students practice under the exam conditions and will get used to the pressure they will have during the actual test
- This course focuses on test-taking strategies that students need to get high score on the TOEFL test.

Module Outline

	Regular		Score Guarantee				
Course	Beginner	Advance	61	70	80	90	100
Campus	Baguio & Clark	Baguio	Baguio				
Requirement	Entrance Exam by Test Course Coordinator		TOEFL 40	TOEFL 50	TOEFL 65	TOEFL 77	TOEFL 88
			· Official IELTS Score · Mock Test + Interview		Only Official TOEFL Score		
Duration	Over than 4 weeks		8 weeks / 12 weeks Program				
Subject	1:1 TOEFL Reading / 1:1 TOEFL Listening 1:1 TOEFL Speaking / 1:1 TOEFL Writing 1:5 TOEFL group class (Reading and Listening)		1:1 TOEFL Speaking 2 times 1:1 TOEFL Writing 2 times 1:5 TOEFL group class (Reading and Listening) If student wants to have 4 main skill class, the school can adjust it for student.				
What student must do?	TOEFL mock test twice a month Mandatory TOEFL vocabulary test		· Student should not absent class more than 2 times. · Student should not receive any penalty especially ground from school. (If student violate school's rule and got ground, student will be disqualified from Score Guarantee course. And there has no refund from school and agencies.) · TOEFL mock test every week / Mandatory TOEFL vocabulary test.				
Guranteed Benefit	None		Free Official TOEFL test once. · If student fail to achieve guaranteed score before end of program, school will give free TOEFL official test once. (However, accommodation and visa extension are not including in.)				



Student's Program Reviews

HELP offers a broad array of TOEFL resources and test preparation materials to help prepare for test day so I felt that the school is a reliable place to study TOEFL. I can feel that my English skills have improved a lot thanks to the properly designed curricula and the TOEFL expert teachers of HELP. Based on my experience, I think that the most significant way to improve your English skills would be utilizing all test materials and being diligent by practicing it yourself.

Consequently, I recommend students to do their best in HELP using everything they can employ.





TOEIC

Test of English for International Communication



Offered in
Baguio and Clark Campus

Good for
Beginner to Advanced Level students

Program Information

The Test of English for International Communication (TOEIC) is an English language test designed specifically to measure the everyday English skills of people working in international business or planning to use English to communicate with others.

This TOEIC Preparatory program HELP is designed to provide students with a solid foundation in English and test taking skills for TOEIC by utilizing up-to-date materials.

Students not only practice the test materials but also learn real English in simulated situations which make the program a little bit ESL Flavored.

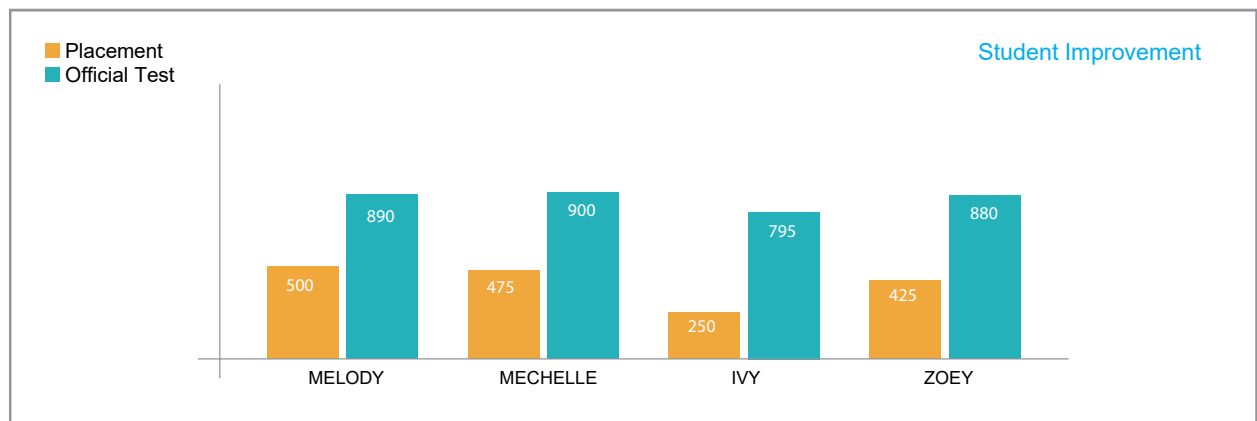
Program Features

- This course gives students a detailed look at what the test is like. Students will learn how to approach each section of the TOEIC test to avoid problems with the time limit.
- Each exercise in this program contains a model response so students can study how to improve their score in each test sections.

Module Outline

Course	TOEIC
Campus	Baguio & Clark
Features	Will give TOEIC class based on each part with Mock test
Subject	1:1 Listening Part 1 & 2 / 1:1 Listening Part 3 & 4 / 1:1 Reading Part 5 & 6 / 1:1 Reading Part 7 1:4 Group class (Reading and Listening)
1:1 Class	Total 4 times (40 minutes each)
1:5 Class	Total 1 time (40 minutes each)
Mandatory Class	Special Class / Vocabulary and Pattern study and test / Mock Test
Optional Class	Self-Study

	Baguio Campus		Clark Campus
	Beginner - Intermediate	Advance	
Recommend to who?	Good for student who haven't experienced about TOEIC or who wants to improve basic skills for TOEIC	Good for student who wants to achieve high score from TOEIC	Good for student who wants to enjoy not only TOEIC LC and RC
TOEIC Mock Test	Twice a month	Once a week	Once a week
About Special Class	<ul style="list-style-type: none"> Additional lesson with interesting topic (Ex) debate, dictation, pronunciation, etc 	<ul style="list-style-type: none"> Additional academic lesson (Ex) grammar, pattern, etc.... 	<ul style="list-style-type: none"> Additional lesson with interesting topic (Ex) debate, dictation, pronunciation, etc.
About Mandatory class	<ul style="list-style-type: none"> Vocabulary test based on ETS TOEIC Vocabulary Students will have penalty if they absent or failed test. 	<ul style="list-style-type: none"> Vocabulary test based on ETS TOEIC Vocabulary Students will have penalty if they absent or failed test. 	<ul style="list-style-type: none"> Vocabulary test based on ETS TOEIC Vocabulary. Students will have penalty if they absent or failed test.



Student's Program Reviews

Through HELP's Preparatory Course, I had the opportunity to gain comprehensive knowledge in TOEIC. After I completed the program, I'm able to describe what kinds of questions are found in which parts of the test and how much time is given for each part.

This program helped me explore and learn all techniques and strategies on how to take the actual test. I think that it is easier to get higher score if the students already have some basic skills.





Business Communication

This program is designed to enable students to acquire proficiency of Business English and the fundamental communication skills needed for employment in an international environment. Business English is the global lingua franca of the international trades distinguishing itself from the language by adopting a formal manner of speech and expressions that can be understood anywhere in the world clearly and accurately. Through this program, students are expected to practice and simulate realistic business situations such as business trips, meetings, and presentations.

Every day, students have 4 individual classes focusing on Macro Skills (Speaking, Writing, Listening and Reading) with the business approach. 1 group class is allotted to give students the chance to practice their practical skills (Present, Debate, Discuss and Interview) by cases. Moreover, the Reading Intensive program will boost students' reading, grammar and writing skills and Special Classes are supplemental to develop other related skills of students (with academic purposes).

Module Outline

Course	Business Communication (Stage 1)	Business Communication (Stage 2)
Campus	Clark	
Features	Beginner Course Writing resume, Business letter, and Presentation	Advance Course will have debating and lecture based on real business case.
Subject	1:1 Business Presentation / 1:1 Business Writing / 1:1 Job Interview / 1:1 Resume Writing 1:5 Debating class based on real case + Grammar class	
Mandatory Class	<ul style="list-style-type: none"> Special Class Mandatory Vocabulary Test (source comes from ETS TOEIC Voca) 	
Optional Class	Self-Study	

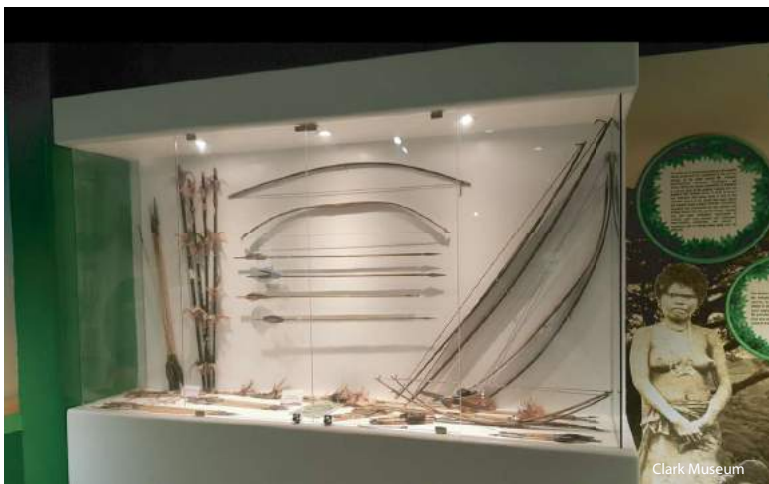
Activities in Clark



Clark Air Force City Park



Clark Aqua Planet



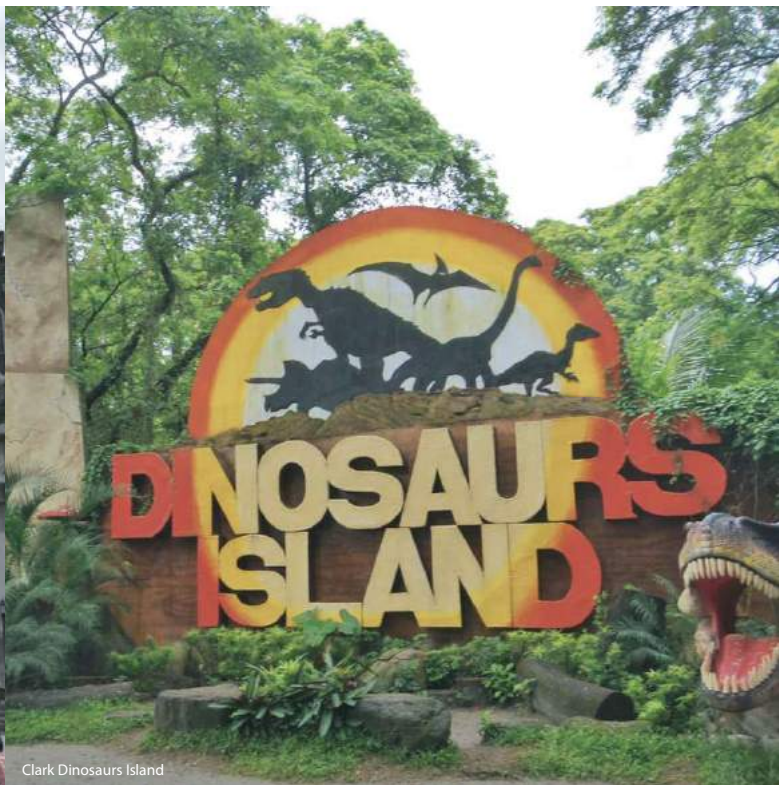
Clark Museum



Baguio Zoocobia Fun Zoo



Clark Nayong Pilipino



Clark Dinosaurs Island



Clark Veiw



Clark SM City



Philippine International Hot Air Balloon Fiesta



Clark Museum's 4D Theater